

Ashe County (NC)

2nd Quarter 2008



County Profile Contact (919) 715-6374

Commerce Economic Development Contact (919) 733-4977

Demographics

Population & Growth

	Population	Annual Growth Rate
2012 Total Population	28,100	1.1%
2007 Total Population	26,624	1.2%
2000 Total Population	24,384	
July 2006 Certified Population Estimate	25,778	
July 2006 Certified Population Growth	-245	
July 2006 Certified Net Migration	1,639	

Urban/Rural Representation

		Urban/Rural Percent
2000 Total Population: Urban - inside Urbanized Area	0	0.0%
2000 Total Population: Urban - inside Urbanized Clusters	0	0.0%
2000 Total Population: Rural - Farm	1,038	4.3%
2000 Total Population: Rural - Nonfarm	23,346	95.7%

Estimated Population by Age

		Pop by Age, % Est.
2012 Median Age	46	
2007 Median Age	44	
2000 Median Age	42	
2007 Total Pop 0-19	5,406	20.3%
2007 Total Pop 20-29	2,755	10.3%
2007 Total Pop 30-39	3,412	12.8%
2007 Total Pop 40-49	4,085	15.3%
2007 Total Pop 50-59	4,252	16.0%
2007 Total Pop 60+	6,714	25.2%

Working Commuters, 2000 Census

Workers, Travel Time

Avg Travel Time, Not at Home	27
Workers Not Working at Home	10,511
Travel Time to Work: < 5 minutes	316
Travel Time to Work: 5-9 minutes	978
Travel Time to Work: 10-14 minutes	1,700
Travel Time to Work: 15-19 minutes	1,733
Travel Time to Work: 20-24 minutes	1,591
Travel Time to Work: 25-29 minutes	613
Travel Time to Work: 30-34 minutes	1,182
Travel Time to Work: 35-39 minutes	221
Travel Time to Work: 40-44 minutes	334
Travel Time to Work: 45-59 minutes	976
Travel Time to Work: 60-89 minutes	479
Travel Time to Work: 90+ minutes	388

Workers, By Transportation

Worker Mode, Base	11,082
Work at Home	571
Drove Car/Truck/Van Alone	8,448
Carpooled Car/Truck/Van	1,774
Bus/Trolley Bus	0
Streetcar/Trolley Car	0
Subway/Elevated	0
Railroad	0
Ferryboat	0
Taxicab	2
Motorcycle	6
Bicycle	0
Walked	115
Other Means	166

Travel to Work

	Commuters	Percent by Residence
Worked in State/County of Residence	8,288	74.8%
Worked in State/Outside County of Residence	2,545	23.0%
Worked Outside State of Residence	249	2.2%

Education

		Pop Age 25+, %
2007 Average SAT score	1509	
2007 Percent of Graduates taking SAT	51%	
2005-06 Higher Education Completions	.	
2005-06 Higher Education Total Enrollment	.	
2000 Education Attainment - At Least High School Graduate	12,158	68.6%
2000 Education Attainment - At Least Bachelor`s Degree	2,141	12.1%

Housing

		Growth / Appreciation Est
2012 Total Housing	16,068	7.5%
2007 Total Housing	14,952	
2012 Median Value of Owner Occupied Housing	148,726	15.1%
2007 Median Value of Owner Occupied Housing	129,240	
2007 Owner Occupied Housing	9,591	
2007 Renter Occupied Housing	2,149	
2007 Total Households	11,740	
2000 Median Year Housing Structure Built	1,977	

Income

		Growth Estimated
2012 Median Family Income	\$50,151	14.7%
2007 Median Family Income	\$43,737	22.2%
2000 Median Family Income	\$35,797	
2012 Median Household Income	\$39,377	13.0%
2007 Median Household Income	\$34,858	21.0%
2000 Median Household Income	\$28,800	
2007 Median Disposable Income	\$28,272	
2007-2012 Per Capita Income: Annual Compound Growth Rate %		2.9%
2012 Per Capita Income	\$23,671	15.3%
2007 Per Capita Income	\$20,526	24.9%
2000 Per Capita Income	\$16,429	
2000 Total Pop with Income Below Poverty Level	3,246	
2000 Percent of Pop with Income Below Poverty Level	13.5%	

Employment / Unemployment

	Year to Date	2007 Annual
Employment (YTD2008Q1)	12,566	12,829
Unemployment (YTD2008Q1)	847	654
Unemployment Rate (YTD2008Q1)	6.3%	4.9%
Announced Job Creation (YTD2008Q1)	.	0
Total Announced Investments (\$mil)(YTD2008Q1)	.	\$26
Lost Jobs, Closings & Layoffs (YTD2008Q2)	.	0
Establishment Events, Closings & Layoffs (YTD2008Q2)	.	0

Employment / Wages by Industry	2007 3rd Qtr Employment	2006 Annual Employment	2007 3rd Qtr Avg Weekly Wage	2006 Avg Weekly Wage
Total All Industries	7,476	6,751	\$525	\$503
Total Government	722	857	\$673	\$591
Total Private Industry	6,754	5,894	\$509	\$508
Agriculture Forestry Fishing & Hunting	0	0	.	.
Mining	0	0	.	.
Utilities	0	0	.	.
Construction	880	783	\$566	\$590
Manufacturing	1,629	1,808	\$642	\$589
Wholesale Trade	121	112	\$493	\$615
Retail Trade	1,237	1,119	\$383	\$379
Transportation and Warehousing	54	51	\$657	\$693
Information	124	118	\$608	\$589
Finance and Insurance	210	204	\$720	\$684
Real Estate and Rental and Leasing	87	74	\$353	\$381
Professional and Technical Services	65	73	\$449	\$437
Management of Companies and Enterprises	168	146	\$891	\$793
Administrative and Waste Services	112	94	\$443	\$489
Educational Services	472	595	\$695	\$630
Health Care and Social Assistance	1,249	1,258	\$524	\$504
Arts, Entertainment and Recreation	111	2	\$347	\$616
Accommodation and Food Services	640	0	\$222	.
Other Services Ex. Public Admin	146	126	\$487	\$391
Public Administration	140	142	\$576	\$581
Unclassified	31	46	\$333	\$430

Quality of Life

Taxes

FY2008-09 Property Tax Rate per \$100 Value	\$0.4250
FY2006-07 Annual Taxable Retail Sales (\$mil)	\$169.0
2008 Tier designation	2

Weather

Annual Rainfall	50
Annual Snowfall	30
Average Annual Temperature	58
Average Annual High Temperature	70
Average Annual Low Temperature	47

Commercial/Retail/Industrial

2008 Available Industrial Buildings	5
2006 Establishments: Total Private Industry	1,198
2006 Establishments: Manufacturing	31

Childcare

May 2008 Licensed Child Care Facilities	20
May 2008 Licensed Child Care Slots	1,442

Healthcare Providers

2006 Number of Physicians	19
2006 Physicians per 10,000 population	7
2006 RNs per 10,000 population	48
2006 Dentists per 10,000 population	2
2006 Pharmacists per 10,000 population	4

Local Retail Business

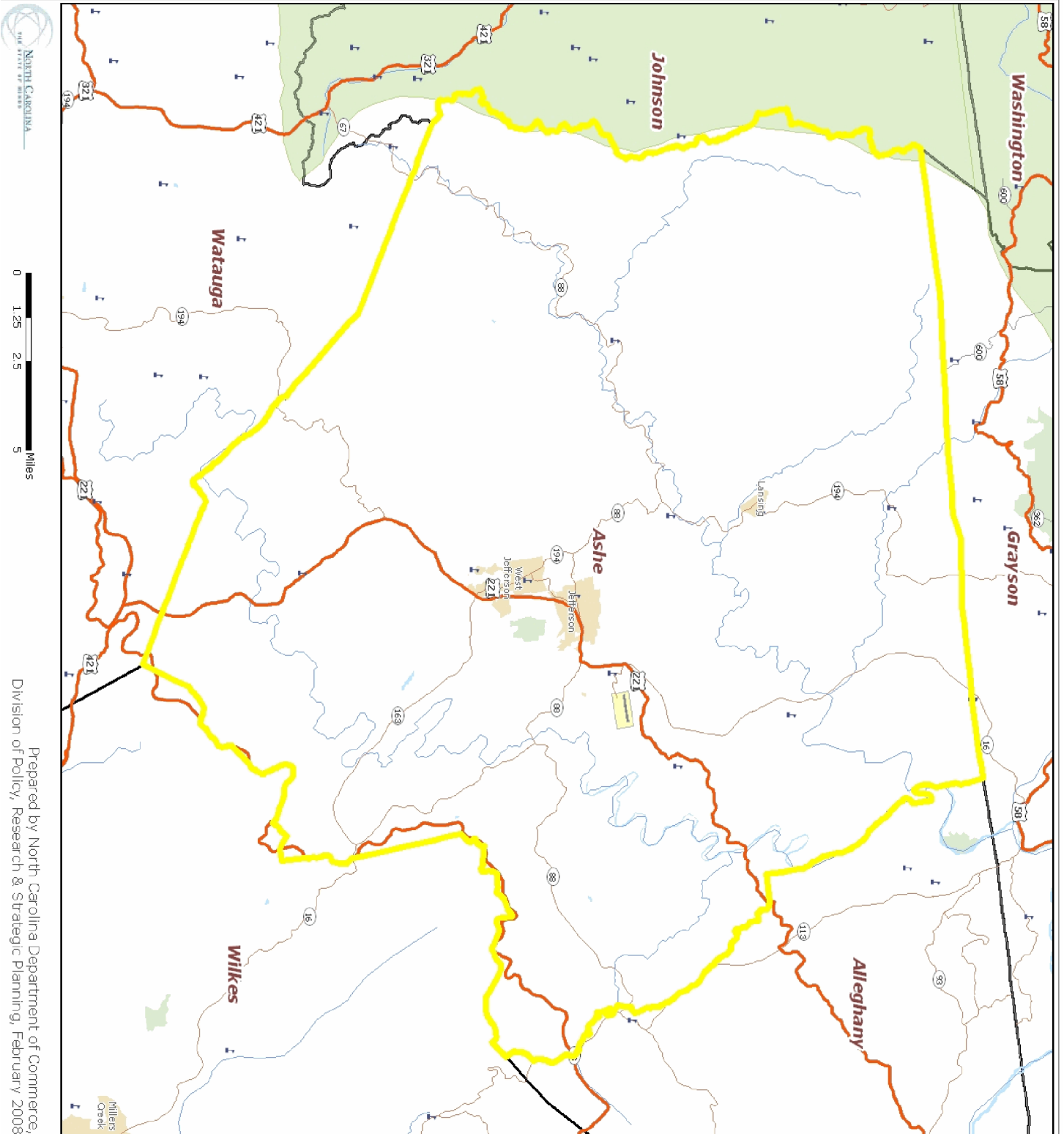
2007 Total Retail Sales (With Food/Drink) (\$mil)	\$320.1
2007 Total Retail Businesses (With Food/Drink)	351
2007 Avg Household Retail Demand (Food/Drink) (\$)	\$20,718

Sources:

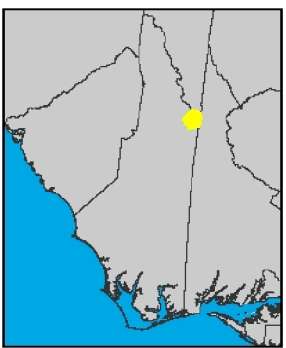
ESRI for demographics, working population, educational attainment, housing, income, crime, weather, and retail data. <http://www.esri.com>
 NC Dept. of Education and various state education departments for SAT data by county system. <http://www.ncpublicschools.org>
 US Dept. of Education, National Center for Education Statistics for higher education data. <http://nces.ed.gov/ipeds/>
 NC Commerce for announced new jobs and investment, NC tiers, and number of industrial buildings. <http://www.nccommerce.com/en>
 NC Employment Security Commission for lost jobs and affected establishments data. <http://www.ncesc.com>
 NC Dept. of Health & Human Services for childcare data. <http://www.ncdhhs.gov/>
 UNC Sheps Center for healthcare provider statistics. <http://www.shepscenter.unc.edu/>
 US Bureau of Labor Statistics for employment and unemployment, wages and establishments by industry. <http://www.bls.gov>

Notes:

Data are the latest available at the date the profile was prepared. SAT scores use the new scoring system including a writing test for a perfect score of 2400 and represent county systems. ESRI 2007/2012 data are projections. Some data may be available only for North Carolina. For further details or questions, please check the Data Sources Guide at <https://edis.commerce.state.nc.us/docs/bibliography/dataGuide.htm>.



Prepared by North Carolina Department of Commerce,
Division of Policy, Research & Strategic Planning, February 2008



- Legend**
- Hospital
 - Public University
 - Private University
 - NC Community Colleges
 - School
 - Limited Access
 - Highway
 - Major Road
 - Local Road
 - Minor Road
 - Other Road
 - Ramp
 - Ferry
 - Pedestrian Way
 - Railroads (Local)
 - Airport Area
 - Stream
 - Intermittent Stream
 - Canal
 - Dam
 - National Park or Forest
 - State Park or Forest
 - Local Park or Recreation Area
 - Municipal Boundaries