

Burke County

Reporting Quarter: 4th Quarter 2007

County Profile Contact (919) 715-6374
Economic Development Contact (919) 733-4977

Demographics

Certified Population, July 2006	88,664	31
Population, 2000 Census	89,145	29
Population, 1990 Census	75,740	28
Percent population change, 1990-2000	17.7	44
Percent population change, NC, 1990-2000	21.3	

County Rank



Workforce & Education

Employment, Nov 2007	39,070	31
Unemployed, Nov 2007	2,325	27
Percent unemployed, Nov 2007	5.6	26
Percent unemployed, 2006	5.8	26
Percent unemployed, NC, Nov 2007	5.1	
Percent unemployed, NC, 2006	4.8	
Percent high school graduates or higher, 2000	67.6	86
Percent high school graduates or higher, NC, 2000	78.1	
Average SAT score (2400 scale), 2007	1,514	16
Average SAT score (2400 scale), NC, 2007	1,486	
Percent bachelor's degree or higher, 2000	12.8	56
Percent bachelor's degree or higher, NC, 2000	22.5	

Taxes, Sales & Services

Property taxes/\$100 Value ('07-'08)	\$0.5200
Taxable sales (Mil \$, Sept 07)	\$40.0
Taxable sales (Mil \$, FY 06-07)	\$440.7
Pharmacist/10,000 Pop, 2006	9
Physician/10,000 Pop, 2006	21
RN/10,000 Pop, 2006	106
Dentist/10,000 Pop, 2006	4
Tier designation, 2008	1
Partnership Region	Advantage West
Licensed Child Care Facilities, Sept 07	84
Child Care Slots, Sept 07	4,955

Income, Housing & Poverty

Average weekly wage per employee, 2nd Quarter 2007	\$585	32
Median household income, 2005	\$34,430	65
Per capita personal income, 2000	\$22,961	52
Per capita personal income, 2005	\$25,945	53
Per capita personal income, NC, 2006	\$32,234	
Median value of owner-occupied housing units, 2000	\$77,678	63
Median value of owner-occupied housing units, NC, 2000	\$108,300	
Percent in poverty, 2005	14.6	61
Percent in poverty, NC, 2005	14.9	

Notes: Data are the latest available at the date the profile was prepared. Demographics are from U.S. Census. Workforce & Education are from NC Employment Security Commission, U.S. Census, and NC Dept. of Public Instruction respectively; county unemployment rates are seasonally unadjusted. Average wage are from ESC's "Insured Employment and Wages in NC for Private Industry by Sector (2 digit)" which is based on the Current Population Survey. Income, Housing & Poverty are from U.S. Bureau of Economic Analysis and the U.S. Census, respectively. Jobs and Investments are from NC Dept. of Commerce. Closings & Layoffs by effective date are from the NC Employment Security Commission. Employment & Wages are from NCESC's "Insured Employment and Wages in NC for Industry by Sector (2 digit)" series; missing data or * indicates data not available or suppressed for confidentiality reasons. Taxes are from the NC Dept. of Revenue and prior to 7/05 represent gross sales but after are taxable sales. Medical data from the Cecil G. Sheps Center for Health Services Research, UNC-Chapel Hill. **County Ranking 1=highest.

Announced Jobs & Investments

Jobs announced, 2006	102
Jobs announced, Thru Oct 12, 2007	262
Total investment announced, 2006	\$14,050,000
Total investment announced, Thru Oct 12, 2007	\$25,800,000

Announced Closings & Layoffs

Number of affected establishments, 2006	5
Number of affected establishments, Thru Dec 2007	8
Job losses, 2006	207
Job losses, Thru Dec 2007	747

Employment and Wages, by Sector (2nd Quarter 2007)

	Burke			North Carolina		
	Avg Emp	% Total	Avg Wkly Wage	Avg Emp	% Total	Avg Wkly Wage
Total All Industries	32,791	100.0	\$585	4,070,849	100.0	\$718
Total Government	8,317	25.4	\$625	678,349	16.7	\$754
Total Private Industry	24,474	74.6	\$572	3,392,501	83.3	\$711
Agriculture Forestry Fishing & Hunting	89	0.3	\$479	30,294	0.7	\$517
Mining	0	0.0	\$0	4,055	0.1	\$1,176
Utilities	62	0.2	\$826	13,939	0.3	\$1,378
Construction	808	2.5	\$565	255,709	6.0	\$729
Manufacturing	9,301	28.4	\$671	537,281	13.2	\$876
Wholesale Trade	580	1.8	\$668	182,823	4.5	\$1,021
Retail Trade	2,571	7.8	\$415	462,301	11.4	\$468
Transportation and Warehousing	757	2.3	\$643	115,772	2.8	\$721
Information	132	0.4	\$630	72,926	1.8	\$1,025
Finance and Insurance	438	1.3	\$732	152,965	3.8	\$1,183
Real Estate and Rental and Leasing	190	0.6	\$405	54,786	1.3	\$673
Professional and Technical Services	462	1.4	\$669	182,439	4.5	\$1,082
Management of Companies and Enterprises	292	0.9	\$1,006	69,658	1.7	\$1,374
Administrative and Waste Services	1,148	3.5	\$379	243,995	6.0	\$505
Educational Services	134	0.4	\$300	57,097	1.4	\$711
Health Care and Social Assistance	4,685	14.3	\$637	434,459	10.7	\$688
Arts, Entertainment and Recreation	165	0.5	\$257	53,965	1.3	\$551
Accommodation and Food Services	2,153	6.6	\$207	346,693	8.5	\$260
Other Services Ex. Public Admin	414	1.3	\$426	103,559	2.5	\$475
Public Administration				228,584	5.6	\$765
Unclassified	76	0.2	\$387	17,783	0.4	\$651

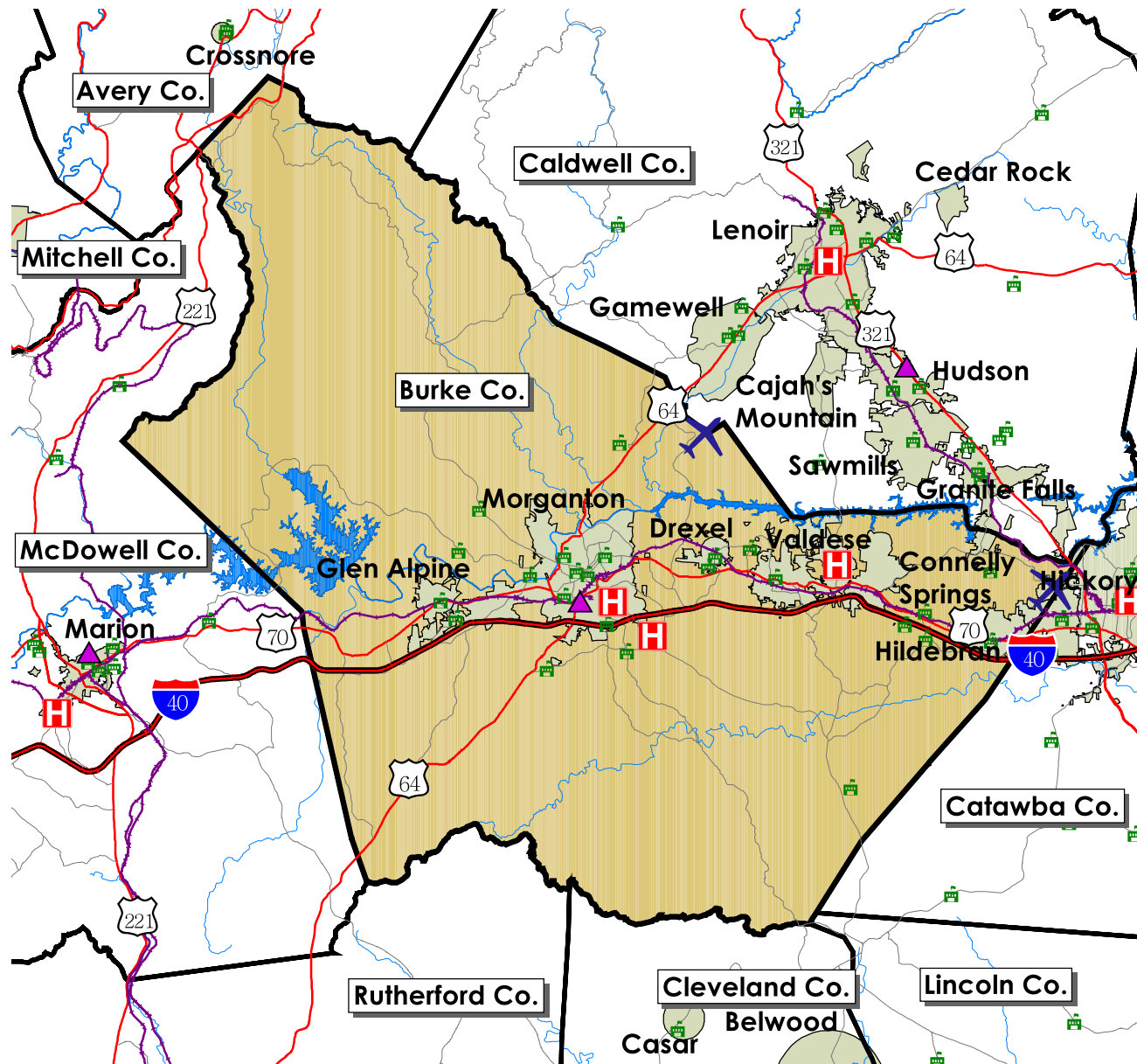
Trends Profile Map Burke County



Legend

-  Public Schools
-  Airports
-  Hospitals
-  Colleges and Universities
-  Community Colleges
-  Rail Lines
-  Interstate highways
-  US Highways
-  State and County Highways
-  Major Rivers and Streams
-  Major Waterbodies
-  Municipal Boundaries

0 5 Miles

BurkeCounty

Employment Characteristics

Reporting Quarter: 4th Quarter 2007

County Profile Contact (919) 715-6374

Commerce Economic Development Contact (919) 733-4977

Employment Security Commission (919) 733-2936

Top Manufacturers (2nd Quarter 2007)

HDM FURNITURE INDUSTRIES INC
CASE FARMS PROCESSING INC
LEVITON MANUFACTURING CO INC
VALDESE WEAVERS LLC
CONTINENTAL TEVES INC
BSN MEDICAL INC
VISCOTEC AUTOMOTIVE PRODUCTS LLC
C/O SARA LEE BAKERY GROUP
BAKER KNAPP & TUBBS INC
SAFT AMERICA INC

Employment Range

500-999
500-999
500-999
500-999
250-499
250-499
250-499
250-499
250-499
250-499



Top Non-Manufacturing Employers (2nd Quarter 2007)

STATE OF NORTH CAROLINA
BURKE COUNTY PUBLIC SCHOOLS
TURNING POINT SERVICES INC
GRACE HOSPITAL INC
BURKE COUNTY
WESTERN PIEDMONT COMMUNITY COLLEGE
CITY OF MORGANTON INCORPORATED
VALDESE GENERAL HOSPITAL INC
HDM FURNITURE INDUSTRIES INC
FOOD LION LLC

Employment Range

1,000+
1,000+
500-999
500-999
500-999
250-499
250-499
250-499
250-499
250-499

Industry

Public Administration
Education and Health Services
Education and Health Services
Education and Health Services
Public Administration
Education and Health Services
Public Administration
Education and Health Services
Professional and Business Services
Trade, Transportation, and Utilities