

Caldwell County

Reporting Quarter: 4th Quarter 2007

County Profile Contact (919) 715-6374
Economic Development Contact (919) 733-4977

Demographics

Certified Population, July 2006	79,297	33
Population, 2000 Census	77,708	31
Population, 1990 Census	70,709	29
Percent population change, 1990-2000	9.9	78
Percent population change, NC, 1990-2000	21.3	

County Rank



Workforce & Education

Employment, Nov 2007	36,696	34
Unemployed, Nov 2007	2,659	23
Percent unemployed, Nov 2007	6.8	6
Percent unemployed, 2006	7.5	6
Percent unemployed, NC, Nov 2007	5.1	
Percent unemployed, NC, 2006	4.8	
Percent high school graduates or higher, 2000	66.2	90
Percent high school graduates or higher, NC, 2000	78.1	
Average SAT score (2400 scale), 2007	1,493	27
Average SAT score (2400 scale), NC, 2007	1,486	
Percent bachelor's degree or higher, 2000	10.4	86
Percent bachelor's degree or higher, NC, 2000	22.5	

Taxes, Sales & Services

Property taxes/\$100 Value ('07-'08)	\$0.6599
Taxable sales (Mil \$, Sept 07)	\$40.0
Taxable sales (Mil \$, FY 06-07)	\$430.6
Pharmacist/10,000 Pop, 2006	5
Physician/10,000 Pop, 2006	9
RN/10,000 Pop, 2006	49
Dentist/10,000 Pop, 2006	3
Tier designation, 2008	1
Partnership Region	Advantage West
Licensed Child Care Facilities, Sept 07	92
Child Care Slots, Sept 07	4,533

Income, Housing & Poverty

Average weekly wage per employee, 2nd Quarter 2007	\$545	58
Median household income, 2005	\$37,847	43
Per capita personal income, 2000	\$23,900	35
Per capita personal income, 2005	\$26,814	42
Per capita personal income, NC, 2006	\$32,234	
Median value of owner-occupied housing units, 2000	\$79,825	56
Median value of owner-occupied housing units, NC, 2000	\$108,300	
Percent in poverty, 2005	14.3	64
Percent in poverty, NC, 2005	14.9	

Notes: Data are the latest available at the date the profile was prepared. Demographics are from U.S. Census. Workforce & Education are from NC Employment Security Commission, U.S. Census, and NC Dept. of Public Instruction respectively; county unemployment rates are seasonally unadjusted. Average wage are from ESC's "Insured Employment and Wages in NC for Private Industry by Sector (2 digit)" which is based on the Current Population Survey. Income, Housing & Poverty are from U.S. Bureau of Economic Analysis and the U.S. Census, respectively. Jobs and Investments are from NC Dept. of Commerce. Closings & Layoffs by effective date are from the NC Employment Security Commission. Employment & Wages are from NCESC's "Insured Employment and Wages in NC for Industry by Sector (2 digit)" series; missing data or * indicates data not available or suppressed for confidentiality reasons. Taxes are from the NC Dept. of Revenue and prior to 7/05 represent gross sales but after are taxable sales. Medical data from the Cecil G. Sheps Center for Health Services Research, UNC-Chapel Hill. **County Ranking 1=highest.

Announced Jobs & Investments

Jobs announced, 2006	236
Jobs announced, Thru Oct 12, 2007	527
Total investment announced, 2006	\$23,100,000
Total investment announced, Thru Oct 12, 2007	\$610,600,000

Announced Closings & Layoffs

Number of affected establishments, 2006	4
Number of affected establishments, Thru Dec 2007	2
Job losses, 2006	1,232
Job losses, Thru Dec 2007	390

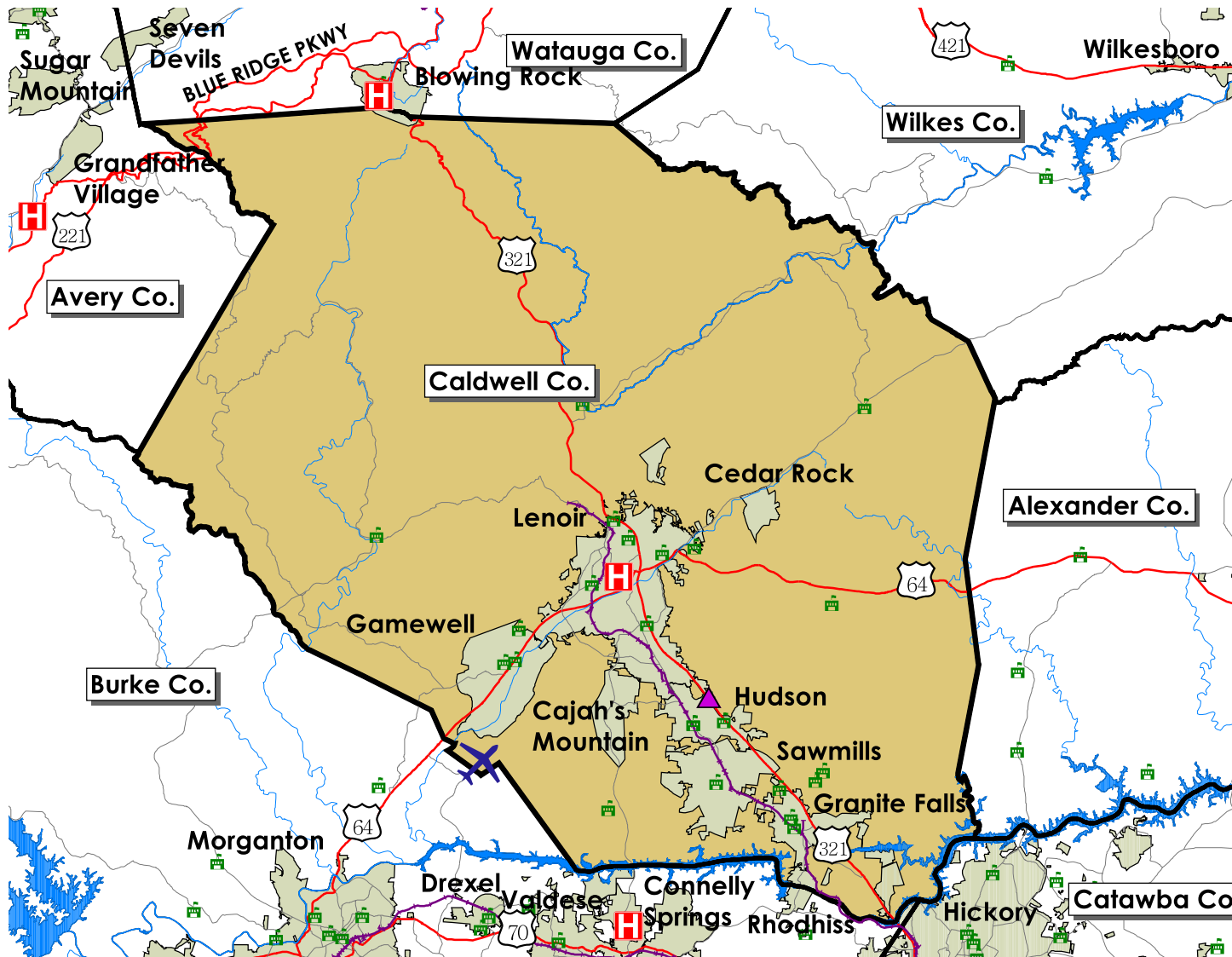
Caldwell

North Carolina

Employment and Wages, by Sector (2nd Quarter 2007)

	Caldwell			North Carolina		
	Avg Emp	% Total	Avg Wkly Wage	Avg Emp	% Total	Avg Wkly Wage
Total All Industries	27,069	100.0	\$545	4,070,849	100.0	\$718
Total Government	4,320	16.0	\$562	678,349	16.7	\$754
Total Private Industry	22,749	84.0	\$542	3,392,501	83.3	\$711
Agriculture Forestry Fishing & Hunting	110	0.4	\$495	30,294	0.7	\$517
Mining	0	0.0	\$0	4,055	0.1	\$1,176
Utilities	34	0.1	\$702	13,939	0.3	\$1,378
Construction	1,086	4.0	\$555	255,709	6.0	\$729
Manufacturing	7,544	27.9	\$566	537,281	13.2	\$876
Wholesale Trade	2,180	8.1	\$775	182,823	4.5	\$1,021
Retail Trade	2,611	9.6	\$392	462,301	11.4	\$468
Transportation and Warehousing	1,134	4.2	\$642	115,772	2.8	\$721
Information	228	0.8	\$677	72,926	1.8	\$1,025
Finance and Insurance	394	1.5	\$730	152,965	3.8	\$1,183
Real Estate and Rental and Leasing	146	0.5	\$365	54,786	1.3	\$673
Professional and Technical Services	364	1.3	\$668	182,439	4.5	\$1,082
Management of Companies and Enterprises	609	2.2	\$1,263	69,658	1.7	\$1,374
Administrative and Waste Services	680	2.5	\$350	243,995	6.0	\$505
Educational Services	71	0.3	\$373	57,097	1.4	\$711
Health Care and Social Assistance	3,341	12.3	\$468	434,459	10.7	\$688
Arts, Entertainment and Recreation	176	0.7	\$243	53,965	1.3	\$551
Accommodation and Food Services	1,489	5.5	\$207	346,693	8.5	\$260
Other Services Ex. Public Admin	460	1.7	\$468	103,559	2.5	\$475
Public Administration				228,584	5.6	\$765
Unclassified	66	0.2	\$347	17,783	0.4	\$651

Trends Profile Map Caldwell County



Legend

- Public Schools
- Airports
- Hospitals
- Colleges and Universities
- Community Colleges
- Rail Lines
- Interstate highways
- US Highways
- State and County Highways
- Major Rivers and Streams
- Major Waterbodies
- Municipal Boundaries

0 5 Miles

Caldwell County

Employment Characteristics

Reporting Quarter: 4th Quarter 2007

County Profile Contact (919) 715-6374

Commerce Economic Development Contact (919) 733-4977

Employment Security Commission (919) 733-2936

Top Manufacturers (2nd Quarter 2007)

BERNHARDT FURNITURE CO INC
THOMASVILLE FURNITURE IND INC
BROYHILL FURNITURE INDUSTRIES INC
PAXAR AMERICAS INC
FAIRFIELD CHAIR CO
KINCAID FURNITURE CO INC
CHEMICAL COATING INC
SEALED AIR CORPORATION
BEMIS MANUFACTURING CO (A CORP)
NEPTCO INC

Employment Range

500-999
500-999
250-499
250-499
250-499
250-499
250-499
100-249
100-249
100-249



Top Non-Manufacturing Employers (2nd Quarter 2007)

CALDWELL COUNTY SCHOOLS
MERCHANTS DISTRIBUTORS INC
CALDWELL MEMORIAL HOSPITAL INC
CALDWELL COMMUNITY COLL & TECH INST
CALDWELL COUNTY
UNIVERSAL MENTAL HEALTH SERVICES
BROYHILL FURNITURE INDUSTRIES INC
CITY OF LENOIR
CALDWELL FREIGHT LINES INC
WAL-MART ASSOCIATES INC

Employment Range

1,000+
1,000+
500-999
500-999
500-999
500-999
250-499
250-499
250-499
250-499

Industry

Education and Health Services
Trade, Transportation, and Utilities
Education and Health Services
Education and Health Services
Public Administration
Education and Health Services
Professional and Business Services
Public Administration
Trade, Transportation, and Utilities
Trade, Transportation, and Utilities