

# Cherokee County

Reporting Quarter: 4th Quarter 2007

County Profile Contact (919) 715-6374  
Economic Development Contact (919) 733-4977

## Demographics

Certified Population, July 2006	26,727	72
Population, 2000 Census	24,298	75
Population, 1990 Census	20,170	79
Percent population change, 1990-2000	20.5	35
Percent population change, NC, 1990-2000	21.3	

## County Rank



## Workforce & Education

Employment, Nov 2007	9,782	77
Unemployed, Nov 2007	585	74
Percent unemployed, Nov 2007	5.6	26
Percent unemployed, 2006	5.4	42
Percent unemployed, NC, Nov 2007	5.1	
Percent unemployed, NC, 2006	4.8	
Percent high school graduates or higher, 2000	73.3	48
Percent high school graduates or higher, NC, 2000	78.1	
Average SAT score (2400 scale), 2007	1,473	32
Average SAT score (2400 scale), NC, 2007	1,486	
Percent bachelor's degree or higher, 2000	11.0	77
Percent bachelor's degree or higher, NC, 2000	22.5	

## Taxes, Sales & Services

Property taxes/\$100 Value ('07-'08)	\$0.5200
Taxable sales (Mil \$, Sept 07)	\$23.9
Taxable sales (Mil \$, FY 06-07)	\$291.4
Pharmacist/10,000 Pop, 2006	10
Physician/10,000 Pop, 2006	14
RN/10,000 Pop, 2006	80
Dentist/10,000 Pop, 2006	3
Tier designation, 2008	2
Partnership Region	Advantage West
Licensed Child Care Facilities, Sept 07	28
Child Care Slots, Sept 07	1,647

## Income, Housing & Poverty

Average weekly wage per employee, 2nd Quarter 2007	\$519	75
Median household income, 2005	\$30,932	85
Per capita personal income, 2000	\$18,576	95
Per capita personal income, 2005	\$21,814	96
Per capita personal income, NC, 2006	\$32,234	
Median value of owner-occupied housing units, 2000	\$75,451	67
Median value of owner-occupied housing units, NC, 2000	\$108,300	
Percent in poverty, 2005	16.4	46
Percent in poverty, NC, 2005	14.9	

Notes: Data are the latest available at the date the profile was prepared. Demographics are from U.S. Census. Workforce & Education are from NC Employment Security Commission, U.S. Census, and NC Dept. of Public Instruction respectively; county unemployment rates are seasonally unadjusted. Average wage are from ESC's "Insured Employment and Wages in NC for Private Industry by Sector (2 digit)" which is based on the Current Population Survey." Income, Housing & Poverty are from U.S. Bureau of Economic Analysis and the U.S. Census, respectively. Jobs and Investments are from NC Dept. of Commerce. Closings & Layoffs by effective date are from the NC Employment Security Commission. Employment & Wages are from NCESC's "Insured Employment and Wages in NC for Industry by Sector (2 digit)" series; missing data or \* indicates data not available or suppressed for confidentiality reasons. Taxes are from the NC Dept. of Revenue and prior to 7/05 represent gross sales but after are taxable sales. Medical data from the Cecil G. Sheps Center for Health Services Research, UNC-Chapel Hill. \*\*County Ranking 1=highest.

## Announced Jobs & Investments

Jobs announced, 2006	0
Jobs announced, Thru Oct 12, 2007	34
Total investment announced, 2006	\$0
Total investment announced, Thru Oct 12, 2007	\$350,000

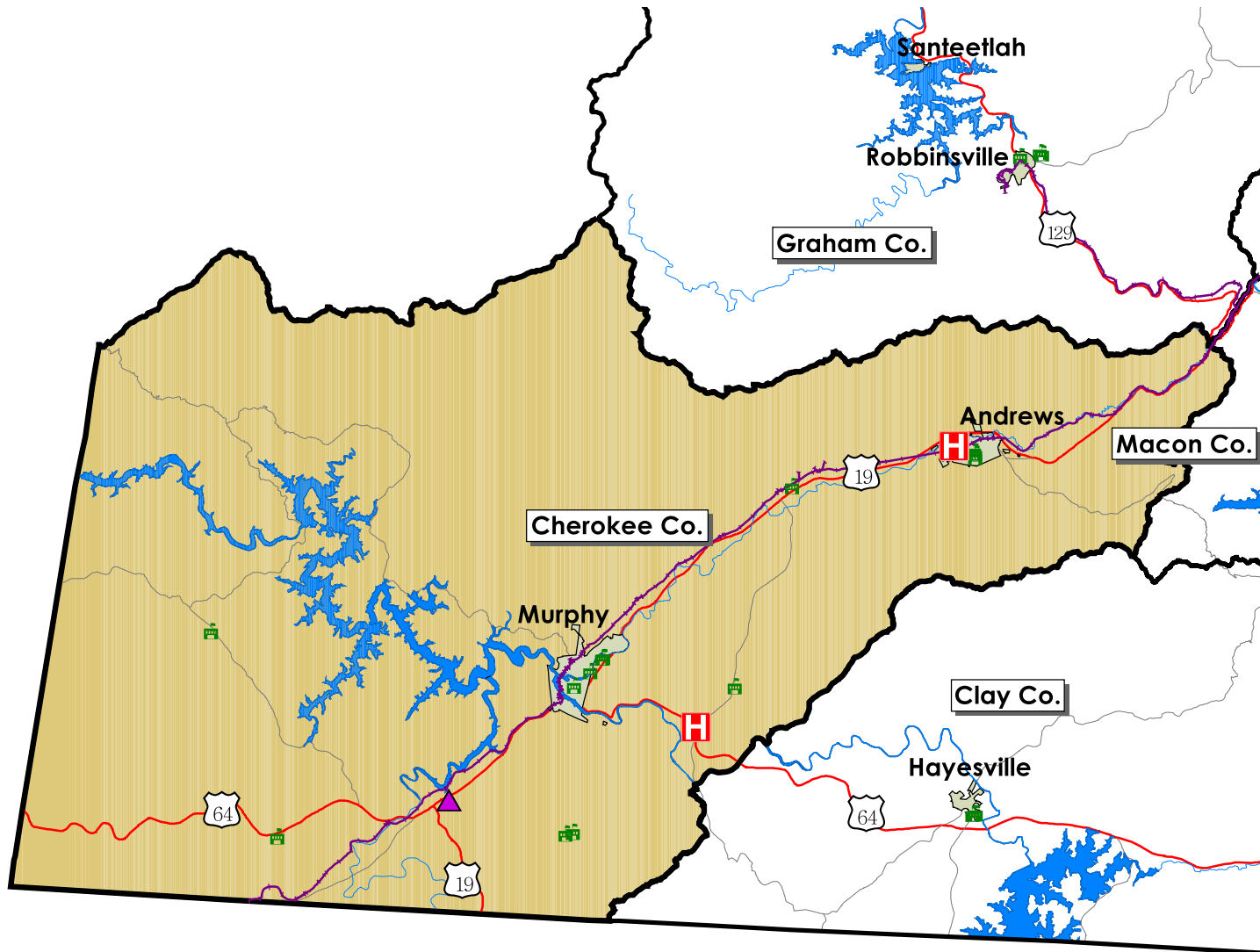
## Announced Closings & Layoffs

Number of affected establishments, 2006	2
Number of affected establishments, Thru Dec 2007	0
Job losses, 2006	250
Job losses, Thru Dec 2007	0

## Employment and Wages, by Sector (2nd Quarter 2007)

	Cherokee			North Carolina		
	Avg Emp	% Total	Avg Wkly Wage	Avg Emp	% Total	Avg Wkly Wage
Total All Industries	8,387	100.0	\$519	4,070,849	100.0	\$718
Total Government	1,490	17.8	\$708	678,349	16.7	\$754
Total Private Industry	6,897	82.2	\$478	3,392,501	83.3	\$711
Agriculture Forestry Fishing & Hunting	0	0.0	\$0	30,294	0.7	\$517
Mining	0	0.0	\$0	4,055	0.1	\$1,176
Utilities	0	0.0	\$0	13,939	0.3	\$1,378
Construction	784	9.3	\$571	255,709	6.0	\$729
Manufacturing	954	11.4	\$611	537,281	13.2	\$876
Wholesale Trade	118	1.4	\$511	182,823	4.5	\$1,021
Retail Trade	1,504	17.9	\$411	462,301	11.4	\$468
Transportation and Warehousing	47	0.6	\$509	115,772	2.8	\$721
Information	120	1.4	\$609	72,926	1.8	\$1,025
Finance and Insurance	270	3.2	\$692	152,965	3.8	\$1,183
Real Estate and Rental and Leasing	167	2.0	\$497	54,786	1.3	\$673
Professional and Technical Services	163	1.9	\$570	182,439	4.5	\$1,082
Management of Companies and Enterprises	22	0.3	\$578	69,658	1.7	\$1,374
Administrative and Waste Services	97	1.2	\$407	243,995	6.0	\$505
Educational Services	70	0.8	\$471	57,097	1.4	\$711
Health Care and Social Assistance	1,401	16.7	\$527	434,459	10.7	\$688
Arts, Entertainment and Recreation	46	0.5	\$191	53,965	1.3	\$551
Accommodation and Food Services	891	10.6	\$202	346,693	8.5	\$260
Other Services Ex. Public Admin	118	1.4	\$356	103,559	2.5	\$475
Public Administration				228,584	5.6	\$765
Unclassified	55	0.7	\$570	17,783	0.4	\$651

# Trends Profile Map Cherokee County



## Legend

- Public Schools
- Airports
- Hospitals
- Colleges and Universities
- Community Colleges
- Rail Lines
- Interstate highways
- US Highways
- State and County Highways
- Major Rivers and Streams
- Major Waterbodies
- Municipal Boundaries



# Cherokee County

Employment Characteristics

Reporting Quarter: 4th Quarter 2007

County Profile Contact (919) 715-6374

Commerce Economic Development Contact (919) 733-4977

Employment Security Commission (919) 733-2936

## Top Manufacturers (2nd Quarter 2007)

INDIAN HEAD INDUSTRIES INC	100-249
SIOUX TOOLS INC	100-249
TEAM INDUSTRIES ANDREWS INC	100-249
COATS AMERICAN INC	50-99
IOI ENTERPRISES INC	50-99
C R BROWN ENTERPRISES INC	50-99
ANDREWS TRUSS INC	Below 50
PEACHTREE INDUSTRIES	Below 50
CAROLINA PRIME PET	Below 50
CHECK MATE	Below 50

## Employment Range



## Top Non-Manufacturing Employers (2nd Quarter 2007)

MURPHY MEDICAL CENTER INC	500-999
CHEROKEE COUNTY BOARD OF EDUCATION	500-999
WAL-MART ASSOCIATES INC	250-499
CHEROKEE COUNTY	250-499
TRI COUNTY COMMUNITY COLLEGE	100-249
INGLES MARKETS INC	100-249
LOWES HOME CENTERS INC	100-249
N C DEPARTMENT OF TRANSPORTATION	100-249
INDUSTRIAL OPPORTUNITIES INC	50-99
DOVER SOUTH INC.	50-99

## Employment Range

## Industry

Education and Health Services
Education and Health Services
Trade, Transportation, and Utilities
Public Administration
Education and Health Services
Trade, Transportation, and Utilities
Trade, Transportation, and Utilities
Public Administration
Education and Health Services
Leisure and Hospitality