

Clay County

Reporting Quarter: 4th Quarter 2007

County Profile Contact (919) 715-6374
Economic Development Contact (919) 733-4977

Demographics

Certified Population, July 2006	10,116	96
Population, 2000 Census	8,775	96
Population, 1990 Census	7,155	97
Percent population change, 1990-2000	22.6	30
Percent population change, NC, 1990-2000	21.3	

County Rank



Workforce & Education

Employment, Nov 2007	4,762	95
Unemployed, Nov 2007	182	98
Percent unemployed, Nov 2007	3.7	88
Percent unemployed, 2006	3.9	88
Percent unemployed, NC, Nov 2007	5.1	
Percent unemployed, NC, 2006	4.8	
Percent high school graduates or higher, 2000	76.5	34
Percent high school graduates or higher, NC, 2000	78.1	
Average SAT score (2400 scale), 2007	1,587	2
Average SAT score (2400 scale), NC, 2007	1,486	
Percent bachelor's degree or higher, 2000	15.4	39
Percent bachelor's degree or higher, NC, 2000	22.5	

Taxes, Sales & Services

Property taxes/\$100 Value ('07-'08)	\$0.4300
Taxable sales (Mil \$, Sept 07)	\$5.1
Taxable sales (Mil \$, FY 06-07)	\$55.3
Pharmacist/10,000 Pop, 2006	6
Physician/10,000 Pop, 2006	6
RN/10,000 Pop, 2006	41
Dentist/10,000 Pop, 2006	4
Tier designation, 2008	1
Partnership Region	Advantage West
Licensed Child Care Facilities, Sept 07	7
Child Care Slots, Sept 07	317

Income, Housing & Poverty

Average weekly wage per employee, 2nd Quarter 2007	\$497	92
Median household income, 2005	\$34,137	66
Per capita personal income, 2000	\$21,164	70
Per capita personal income, 2005	\$23,230	87
Per capita personal income, NC, 2006	\$32,234	
Median value of owner-occupied housing units, 2000	\$90,937	31
Median value of owner-occupied housing units, NC, 2000	\$108,300	
Percent in poverty, 2005	13.3	73
Percent in poverty, NC, 2005	14.9	

Notes: Data are the latest available at the date the profile was prepared. Demographics are from U.S. Census. Workforce & Education are from NC Employment Security Commission, U.S. Census, and NC Dept. of Public Instruction respectively; county unemployment rates are seasonally unadjusted. Average wage are from ESC's "Insured Employment and Wages in NC for Private Industry by Sector (2 digit)" which is based on the Current Population Survey. Income, Housing & Poverty are from U.S. Bureau of Economic Analysis and the U.S. Census, respectively. Jobs and Investments are from NC Dept. of Commerce. Closings & Layoffs by effective date are from the NC Employment Security Commission. Employment & Wages are from NCESC's "Insured Employment and Wages in NC for Industry by Sector (2 digit)" series; missing data or * indicates data not available or suppressed for confidentiality reasons. Taxes are from the NC Dept. of Revenue and prior to 7/05 represent gross sales but after are taxable sales. Medical data from the Cecil G. Sheps Center for Health Services Research, UNC-Chapel Hill. **County Ranking 1=highest.

Announced Jobs & Investments

Jobs announced, 2006	0
Jobs announced, Thru Oct 12, 2007	0
Total investment announced, 2006	\$0
Total investment announced, Thru Oct 12, 2007	\$0

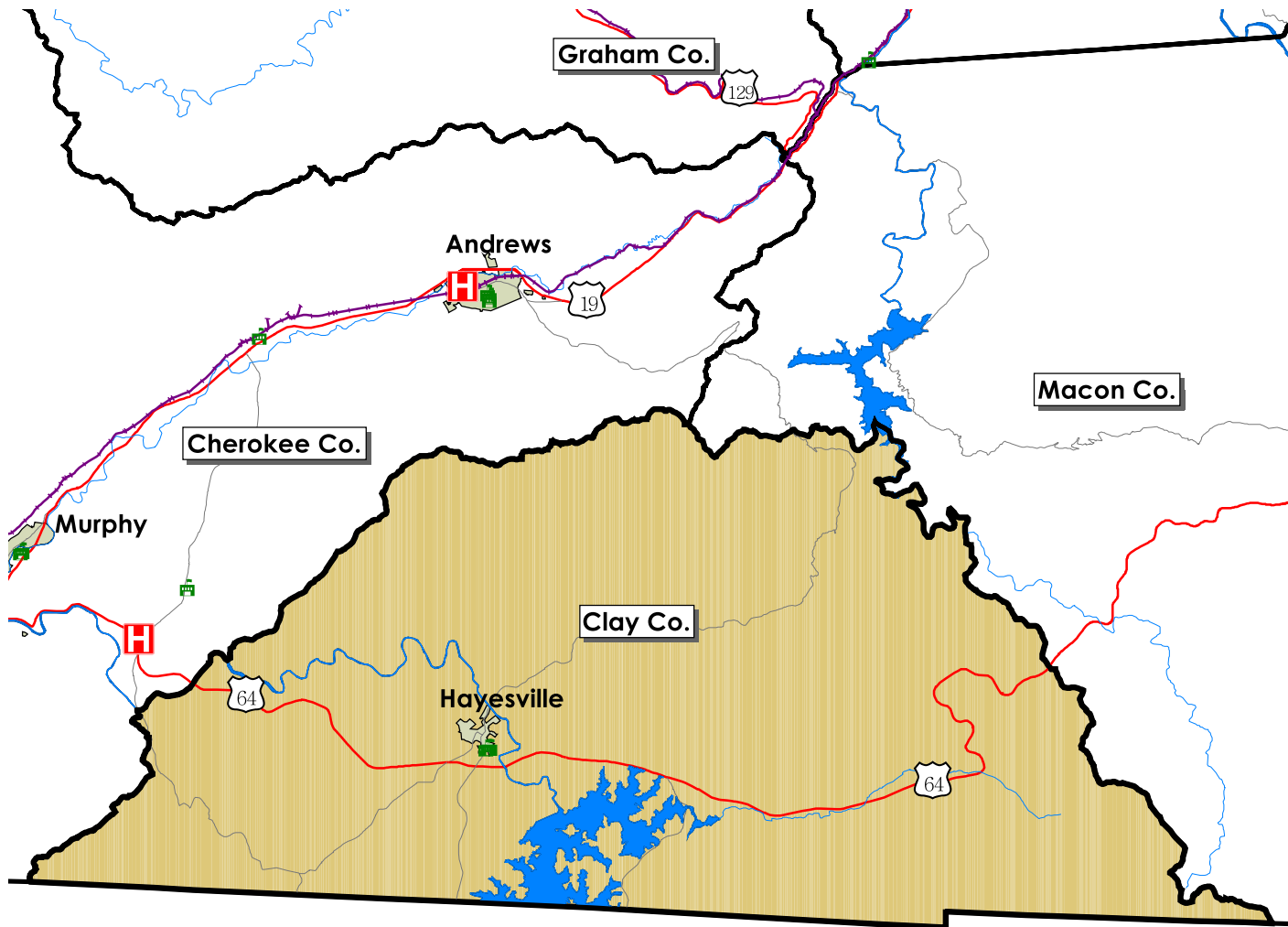
Announced Closings & Layoffs

Number of affected establishments, 2006	0
Number of affected establishments, Thru Dec 2007	0
Job losses, 2006	0
Job losses, Thru Dec 2007	0

Employment and Wages, by Sector (2nd Quarter 2007)

	Clay			North Carolina		
	Avg Emp	% Total	Avg Wkly Wage	Avg Emp	% Total	Avg Wkly Wage
Total All Industries	2,305	100.0	\$497	4,070,849	100.0	\$718
Total Government	516	22.4	\$597	678,349	16.7	\$754
Total Private Industry	1,789	77.6	\$468	3,392,501	83.3	\$711
Agriculture Forestry Fishing & Hunting	0	0.0	\$0	30,294	0.7	\$517
Mining	0	0.0	\$0	4,055	0.1	\$1,176
Utilities	0	0.0	\$0	13,939	0.3	\$1,378
Construction	367	15.9	\$532	255,709	6.0	\$729
Manufacturing	221	9.6	\$548	537,281	13.2	\$876
Wholesale Trade	33	1.4	\$650	182,823	4.5	\$1,021
Retail Trade	423	18.4	\$447	462,301	11.4	\$468
Transportation and Warehousing	4	0.2	\$757	115,772	2.8	\$721
Information	0	0.0	\$0	72,926	1.8	\$1,025
Finance and Insurance	49	2.1	\$553	152,965	3.8	\$1,183
Real Estate and Rental and Leasing	35	1.5	\$543	54,786	1.3	\$673
Professional and Technical Services	47	2.0	\$679	182,439	4.5	\$1,082
Management of Companies and Enterprises	0	0.0	\$0	69,658	1.7	\$1,374
Administrative and Waste Services	19	0.8	\$552	243,995	6.0	\$505
Educational Services	0	0.0	\$0	57,097	1.4	\$711
Health Care and Social Assistance	218	9.5	\$530	434,459	10.7	\$688
Arts, Entertainment and Recreation	74	3.2	\$276	53,965	1.3	\$551
Accommodation and Food Services	223	9.7	\$251	346,693	8.5	\$260
Other Services Ex. Public Admin	23	1.0	\$489	103,559	2.5	\$475
Public Administration				228,584	5.6	\$765
Unclassified	24	1.0	\$285	17,783	0.4	\$651

Trends Profile Map Clay County



Legend

-  Public Schools
-  Airports
-  Hospitals
-  Colleges and Universities
-  Community Colleges
-  Rail Lines
-  Interstate highways
-  US Highways
-  State and County Highways
-  Major Rivers and Streams
-  Major Waterbodies
-  Municipal Boundaries

0  5 Miles

Clay County

Employment Characteristics

Reporting Quarter: 4th Quarter 2007

County Profile Contact (919) 715-6374

Commerce Economic Development Contact (919) 733-4977

Employment Security Commission (919) 733-2936

Top Manufacturers (2nd Quarter 2007)

COLEMAN CABLE INC
ADVANCED DIGITAL CABLE INC
BUCKHORN LUMBER & WOOD PRODUCTS INC
KITCHEN DESIGNS
BLACKHAWK PRODUCTS GROUP

Employment Range

50-99
50-99
Below 50
Below 50
Below 50



Top Non-Manufacturing Employers (2nd Quarter 2007)

CLAY COUNTY BOARD OF EDUCATION
COUNTY OF CLAY
HENSON BUILDING MATERIALS
CLAY COUNTY HEALTHCARE LLC
INGLES MARKETS INC
THE COUNTRY COTTAGE OF HAYESVILLE
MOUNTAIN GOLF LLC
SEQUOYAH AT THE RIDGES COUNTRY CLUB
COX & SON ROOFING INC
JACKY JONES FORD

Employment Range

100-249
100-249
100-249
50-99
50-99
50-99
Below 50
Below 50
Below 50
Below 50

Industry

Education and Health Services
Public Administration
Trade, Transportation, and Utilities
Education and Health Services
Trade, Transportation, and Utilities
Leisure and Hospitality
Leisure and Hospitality
Leisure and Hospitality
Construction
Trade, Transportation, and Utilities