

# Graham County (NC)

## 2nd Quarter 2008



County Profile Contact (919) 715-6374

Commerce Economic Development Contact (919) 733-4977

### Demographics

#### Population & Growth

	Population	Annual Growth Rate
2012 Total Population	8,466	0.5%
2007 Total Population	8,275	0.5%
2000 Total Population	7,993	
July 2006 Certified Population Estimate	8,106	
July 2006 Certified Population Growth	0	
July 2006 Certified Net Migration	113	

#### Urban/Rural Representation

		Urban/Rural Percent
2000 Total Population: Urban - inside Urbanized Area	0	0.0%
2000 Total Population: Urban - inside Urbanized Clusters	0	0.0%
2000 Total Population: Rural - Farm	185	2.3%
2000 Total Population: Rural - Nonfarm	7,808	97.7%

#### Estimated Population by Age

		Pop by Age, % Est.
2012 Median Age	45	
2007 Median Age	44	
2000 Median Age	42	
2007 Total Pop 0-19	1,856	22.4%
2007 Total Pop 20-29	862	10.4%
2007 Total Pop 30-39	1,010	12.2%
2007 Total Pop 40-49	1,148	13.9%
2007 Total Pop 50-59	1,259	15.2%
2007 Total Pop 60+	2,140	25.9%

### Working Commuters, 2000 Census

#### Workers, Travel Time

Avg Travel Time, Not at Home	28
Workers Not Working at Home	3,210
Travel Time to Work: < 5 minutes	177
Travel Time to Work: 5-9 minutes	575
Travel Time to Work: 10-14 minutes	522
Travel Time to Work: 15-19 minutes	494
Travel Time to Work: 20-24 minutes	410
Travel Time to Work: 25-29 minutes	111
Travel Time to Work: 30-34 minutes	319
Travel Time to Work: 35-39 minutes	27
Travel Time to Work: 40-44 minutes	74
Travel Time to Work: 45-59 minutes	164
Travel Time to Work: 60-89 minutes	147
Travel Time to Work: 90+ minutes	190

#### Workers, By Transportation

Worker Mode, Base	3,244
Work at Home	34
Drove Car/Truck/Van Alone	2,201
Carpooled Car/Truck/Van	909
Bus/Trolley Bus	5
Streetcar/Trolley Car	0
Subway/Elevated	0
Railroad	0
Ferryboat	0
Taxicab	0
Motorcycle	0
Bicycle	0
Walked	55
Other Means	40

## Travel to Work

	Commuters	Percent by Residence
Worked in State/County of Residence	2,454	75.6%
Worked in State/Outside County of Residence	555	17.1%
Worked Outside State of Residence	235	7.2%

## Education

		Pop Age 25+, %
2007 Average SAT score	1448	
2007 Percent of Graduates taking SAT	43%	
2005-06 Higher Education Completions	.	
2005-06 Higher Education Total Enrollment	.	
2000 Education Attainment - At Least High School Graduate	3,845	68.4%
2000 Education Attainment - At Least Bachelor`s Degree	631	11.2%

## Housing

		Growth / Appreciation Est
2012 Total Housing	5,719	4.3%
2007 Total Housing	5,483	
2012 Median Value of Owner Occupied Housing	113,781	16.2%
2007 Median Value of Owner Occupied Housing	97,893	
2007 Owner Occupied Housing	3,011	
2007 Renter Occupied Housing	605	
2007 Total Households	3,616	
2000 Median Year Housing Structure Built	1,978	

## Income

		Growth Estimated
2012 Median Family Income	\$44,536	11.7%
2007 Median Family Income	\$39,877	21.1%
2000 Median Family Income	\$32,931	
2012 Median Household Income	\$35,088	11.3%
2007 Median Household Income	\$31,512	19.4%
2000 Median Household Income	\$26,401	
2007 Median Disposable Income	\$25,915	
2007-2012 Per Capita Income: Annual Compound Growth Rate %		2.8%
2012 Per Capita Income	\$20,500	15.0%
2007 Per Capita Income	\$17,831	25.2%
2000 Per Capita Income	\$14,237	
2000 Total Pop with Income Below Poverty Level	1,546	
2000 Percent of Pop with Income Below Poverty Level	19.5%	

## Employment / Unemployment

	Year to Date	2007 Annual
Employment (YTD2008Q1)	4,404	4,445
Unemployment (YTD2008Q1)	461	334
Unemployment Rate (YTD2008Q1)	9.5%	7.0%
Announced Job Creation (YTD2008Q1)	.	.
Total Announced Investments (\$mil)(YTD2008Q1)	.	.
Lost Jobs, Closings & Layoffs (YTD2008Q2)	.	200
Establishment Events, Closings & Layoffs (YTD2008Q2)	.	1

<b>Employment / Wages by Industry</b>	<b>2007 3rd Qtr Employment</b>	<b>2006 Annual Employment</b>	<b>2007 3rd Qtr Avg Weekly Wage</b>	<b>2006 Avg Weekly Wage</b>
Total All Industries	1,508	1,433	\$528	\$494
Total Government	294	323	\$722	\$620
Total Private Industry	1,214	1,110	\$481	\$477
Agriculture Forestry Fishing & Hunting	0	0	.	.
Mining	0	0	.	.
Utilities	7	7	\$644	\$1,046
Construction	425	373	\$732	\$757
Manufacturing	0	0	.	.
Wholesale Trade	0	9	.	\$458
Retail Trade	558	193	\$254	\$356
Transportation and Warehousing	20	10	\$649	\$774
Information	12	13	\$792	\$777
Finance and Insurance	59	61	\$582	\$613
Real Estate and Rental and Leasing	4	5	\$470	\$389
Professional and Technical Services	0	0	.	.
Management of Companies and Enterprises	0	0	.	.
Administrative and Waste Services	81	49	\$535	\$431
Educational Services	216	247	\$688	\$606
Health Care and Social Assistance	0	0	.	.
Arts, Entertainment and Recreation	0	27	.	\$154
Accommodation and Food Services	0	338	.	\$281
Other Services Ex. Public Admin	49	34	\$562	\$432
Public Administration	62	59	\$856	\$835
Unclassified	16	8	\$547	\$306

## Quality of Life

### Taxes

FY2008-09 Property Tax Rate per \$100 Value	\$0.6000
FY2006-07 Annual Taxable Retail Sales (\$mil)	\$42.7
2008 Tier designation	1

### Weather

Annual Rainfall	45
Annual Snowfall	8
Average Annual Temperature	59
Average Annual High Temperature	70
Average Annual Low Temperature	46

### Commercial/Retail/Industrial

2008 Available Industrial Buildings	4
2006 Establishments: Total Private Industry	367
2006 Establishments: Manufacturing	4

### Childcare

May 2008 Licensed Child Care Facilities	10
May 2008 Licensed Child Care Slots	382

### Healthcare Providers

2006 Number of Physicians	4
2006 Physicians per 10,000 population	5
2006 RNs per 10,000 population	44
2006 Dentists per 10,000 population	1
2006 Pharmacists per 10,000 population	3

### Local Retail Business

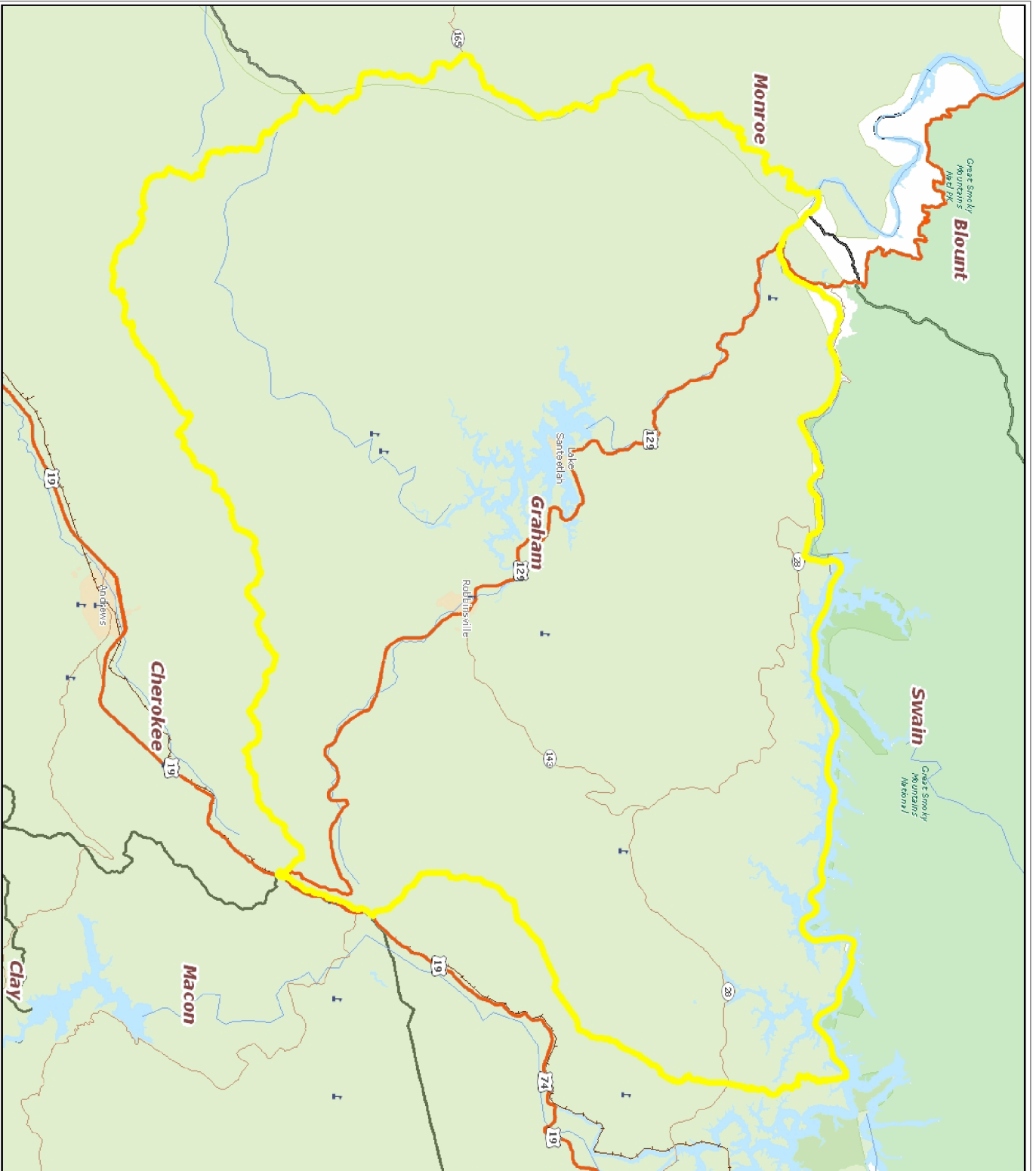
2007 Total Retail Sales (With Food/Drink) (\$mil)	\$50.4
2007 Total Retail Businesses (With Food/Drink)	78
2007 Avg Household Retail Demand (Food/Drink) (\$)	\$18,367

### Sources:

ESRI for demographics, working population, educational attainment, housing, income, crime, weather, and retail data. <http://www.esri.com>  
 NC Dept. of Education and various state education departments for SAT data by county system. <http://www.ncpublicschools.org>  
 US Dept. of Education, National Center for Education Statistics for higher education data. <http://nces.ed.gov/ipeds/>  
 NC Commerce for announced new jobs and investment, NC tiers, and number of industrial buildings. <http://www.nccommerce.com/en>  
 NC Employment Security Commission for lost jobs and affected establishments data. <http://www.ncesc.com>  
 NC Dept. of Health & Human Services for childcare data. <http://www.ncdhhs.gov/>  
 UNC Sheps Center for healthcare provider statistics. <http://www.shepscenter.unc.edu/>  
 US Bureau of Labor Statistics for employment and unemployment, wages and establishments by industry. <http://www.bls.gov>

### Notes:

Data are the latest available at the date the profile was prepared. SAT scores use the new scoring system including a writing test for a perfect score of 2400 and represent county systems. ESRI 2007/2012 data are projections. Some data may be available only for North Carolina. For further details or questions, please check the Data Sources Guide at <https://edis.commerce.state.nc.us/docs/bibliography/dataGuide.htm>.



Prepared by North Carolina Department of Commerce,  
Division of Policy, Research & Strategic Planning, February 2008

**Legend**

- Hospital
- Public University
- Private University
- NC Community Colleges
- School
- Limited Access
- Highway
- Major Road
- Local Road
- Minor Road
- Other Road
- Ramp
- Ferry
- Pedestrian Way
- Railroads (Local)
- Airport Area
- Stream
- Intermittent Stream
- Canal
- Dam
- National Park or Forest
- State Park or Forest
- Local Park or Recreation Area
- Municipal Boundaries

