

Henderson County (NC)

2nd Quarter 2008



County Profile Contact (919) 715-6374

Commerce Economic Development Contact (919) 733-4977

Demographics

Population & Growth

	Population	Annual Growth Rate
2012 Total Population	113,241	2.0%
2007 Total Population	102,665	2.0%
2000 Total Population	89,173	
July 2006 Certified Population Estimate	100,106	
July 2006 Certified Population Growth	-256	
July 2006 Certified Net Migration	11,158	

Urban/Rural Representation

		Urban/Rural Percent
2000 Total Population: Urban - inside Urbanized Area	47,057	52.8%
2000 Total Population: Urban - inside Urbanized Clusters	0	0.0%
2000 Total Population: Rural - Farm	510	0.6%
2000 Total Population: Rural - Nonfarm	41,606	46.7%

Estimated Population by Age

		Pop by Age, % Est.
2012 Median Age	46	
2007 Median Age	45	
2000 Median Age	43	
2007 Total Pop 0-19	22,479	21.9%
2007 Total Pop 20-29	9,427	9.2%
2007 Total Pop 30-39	12,808	12.5%
2007 Total Pop 40-49	14,547	14.2%
2007 Total Pop 50-59	14,607	14.2%
2007 Total Pop 60+	28,797	28.0%

Working Commuters, 2000 Census

Workers, Travel Time

Avg Travel Time, Not at Home	22
Workers Not Working at Home	37,470
Travel Time to Work: < 5 minutes	1,229
Travel Time to Work: 5-9 minutes	3,492
Travel Time to Work: 10-14 minutes	6,528
Travel Time to Work: 15-19 minutes	7,786
Travel Time to Work: 20-24 minutes	6,672
Travel Time to Work: 25-29 minutes	2,632
Travel Time to Work: 30-34 minutes	4,713
Travel Time to Work: 35-39 minutes	795
Travel Time to Work: 40-44 minutes	619
Travel Time to Work: 45-59 minutes	1,405
Travel Time to Work: 60-89 minutes	837
Travel Time to Work: 90+ minutes	762

Workers, By Transportation

Worker Mode, Base	38,711
Work at Home	1,241
Drove Car/Truck/Van Alone	31,281
Carpooled Car/Truck/Van	5,391
Bus/Trolley Bus	46
Streetcar/Trolley Car	0
Subway/Elevated	0
Railroad	0
Ferryboat	0
Taxicab	16
Motorcycle	37
Bicycle	35
Walked	480
Other Means	184

Travel to Work	Commuters	Percent by Residence
Worked in State/County of Residence	28,688	74.1%
Worked in State/Outside County of Residence	8,977	23.2%
Worked Outside State of Residence	1,046	2.7%

Education

		Pop Age 25+, %
2007 Average SAT score	1556	
2007 Percent of Graduates taking SAT	57%	
2005-06 Higher Education Completions	266	
2005-06 Higher Education Total Enrollment	.	
2000 Education Attainment - At Least High School Graduate	54,084	83.2%
2000 Education Attainment - At Least Bachelor's Degree	15,696	24.1%

Housing

		Growth / Appreciation Est
2012 Total Housing	54,853	10.0%
2007 Total Housing	49,844	
2012 Median Value of Owner Occupied Housing	243,224	21.8%
2007 Median Value of Owner Occupied Housing	199,712	
2007 Owner Occupied Housing	34,798	
2007 Renter Occupied Housing	8,905	
2007 Total Households	43,703	
2000 Median Year Housing Structure Built	1,980	

Income

		Growth Estimated
2012 Median Family Income	\$65,382	16.3%
2007 Median Family Income	\$56,239	25.1%
2000 Median Family Income	\$44,972	
2012 Median Household Income	\$55,070	15.6%
2007 Median Household Income	\$47,634	24.5%
2000 Median Household Income	\$38,263	
2007 Median Disposable Income	\$37,511	
2007-2012 Per Capita Income: Annual Compound Growth Rate %		3.5%
2012 Per Capita Income	\$31,537	18.7%
2007 Per Capita Income	\$26,575	25.9%
2000 Per Capita Income	\$21,110	
2000 Total Pop with Income Below Poverty Level	8,526	
2000 Percent of Pop with Income Below Poverty Level	9.7%	

Employment / Unemployment

	Year to Date	2007 Annual
Employment (YTD2008Q1)	46,116	46,516
Unemployment (YTD2008Q1)	1,952	1,688
Unemployment Rate (YTD2008Q1)	4.1%	3.5%
Announced Job Creation (YTD2008Q1)	.	.
Total Announced Investments (\$mil)(YTD2008Q1)	.	.
Lost Jobs, Closings & Layoffs (YTD2008Q2)	.	64
Establishment Events, Closings & Layoffs (YTD2008Q2)	.	2

Employment / Wages by Industry	2007 3rd Qtr Employment	2006 Annual Employment	2007 3rd Qtr Avg Weekly Wage	2006 Avg Weekly Wage
Total All Industries	35,142	34,050	\$617	\$608
Total Government	4,673	4,803	\$713	\$674
Total Private Industry	30,468	29,247	\$602	\$598
Agriculture Forestry Fishing & Hunting	0	0	.	.
Mining	0	0	.	.
Utilities	0	0	.	.
Construction	3,159	2,685	\$653	\$632
Manufacturing	6,064	6,370	\$848	\$858
Wholesale Trade	1,089	904	\$714	\$699
Retail Trade	5,151	5,008	\$502	\$477
Transportation and Warehousing	182	178	\$855	\$886
Information	388	401	\$674	\$666
Finance and Insurance	816	869	\$886	\$911
Real Estate and Rental and Leasing	336	323	\$503	\$500
Professional and Technical Services	843	803	\$695	\$760
Management of Companies and Enterprises	197	146	\$754	\$722
Administrative and Waste Services	2,029	2,138	\$391	\$385
Educational Services	2,038	2,260	\$696	\$603
Health Care and Social Assistance	5,726	5,628	\$708	\$685
Arts, Entertainment and Recreation	699	542	\$435	\$445
Accommodation and Food Services	3,758	3,289	\$267	\$255
Other Services Ex. Public Admin	1,050	1,042	\$384	\$387
Public Administration	1,460	1,352	\$692	\$688
Unclassified	159	112	\$546	\$476

Quality of Life

Taxes

FY2008-09 Property Tax Rate per \$100 Value	\$0.4620
FY2006-07 Annual Taxable Retail Sales (\$mil)	\$918.7
2008 Tier designation	3

Weather

Annual Rainfall	48
Annual Snowfall	11
Average Annual Temperature	58
Average Annual High Temperature	69
Average Annual Low Temperature	46

Commercial/Retail/Industrial

2008 Available Industrial Buildings	62
2006 Establishments: Total Private Industry	5,210
2006 Establishments: Manufacturing	137

Childcare

May 2008 Licensed Child Care Facilities	74
May 2008 Licensed Child Care Slots	4,088

Healthcare Providers

2006 Number of Physicians	222
2006 Physicians per 10,000 population	22
2006 RNs per 10,000 population	94
2006 Dentists per 10,000 population	5
2006 Pharmacists per 10,000 population	7

Local Retail Business

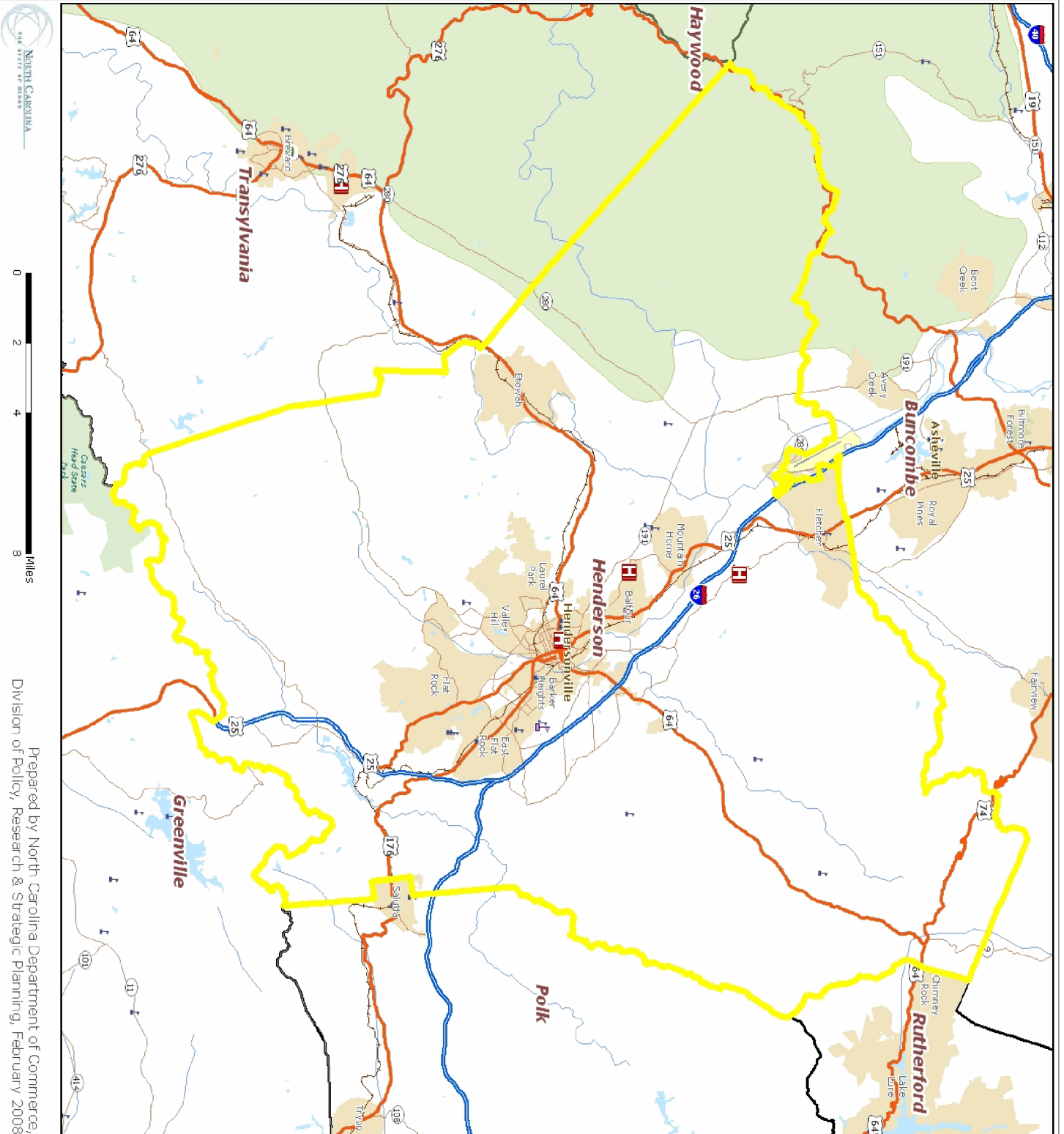
2007 Total Retail Sales (With Food/Drink) (\$mil)	\$1,464.7
2007 Total Retail Businesses (With Food/Drink)	893
2007 Avg Household Retail Demand (Food/Drink) (\$)	\$25,885

Sources:

ESRI for demographics, working population, educational attainment, housing, income, crime, weather, and retail data. <http://www.esri.com>
 NC Dept. of Education and various state education departments for SAT data by county system. <http://www.ncpublicschools.org>
 US Dept. of Education, National Center for Education Statistics for higher education data. <http://nces.ed.gov/ipeds/>
 NC Commerce for announced new jobs and investment, NC tiers, and number of industrial buildings. <http://www.nccommerce.com/en>
 NC Employment Security Commission for lost jobs and affected establishments data. <http://www.ncesc.com>
 NC Dept. of Health & Human Services for childcare data. <http://www.ncdhhs.gov/>
 UNC Sheps Center for healthcare provider statistics. <http://www.shepscenter.unc.edu/>
 US Bureau of Labor Statistics for employment and unemployment, wages and establishments by industry. <http://www.bls.gov>

Notes:

Data are the latest available at the date the profile was prepared. SAT scores use the new scoring system including a writing test for a perfect score of 2400 and represent county systems. ESRI 2007/2012 data are projections. Some data may be available only for North Carolina. For further details or questions, please check the Data Sources Guide at <https://edis.commerce.state.nc.us/docs/bibliography/dataGuide.htm>.



Prepared by North Carolina Department of Commerce,
Division of Policy, Research & Strategic Planning, February 2008

Legend

- Hospital
- Public University
- Private University
- NC Community Colleges
- School
- Limited Access
- Highway
- Major Road
- Local Road
- Minor Road
- Other Road
- Ramp
- Ferry
- Pedestrian Way
- Railroads (Local)
- Airport Area
- Stream
- Intermittent Stream
- Canal
- Dam
- National Park or Forest
- State Park or Forest
- Local Park or Recreation Area
- Municipal Boundaries

