

Henderson County

Reporting Quarter: 4th Quarter 2007

County Profile Contact (919) 715-6374
Economic Development Contact (919) 733-4977

Demographics

Certified Population, July 2006	100,106	25
Population, 2000 Census	89,214	28
Population, 1990 Census	69,747	30
Percent population change, 1990-2000	27.9	15
Percent population change, NC, 1990-2000	21.3	

County Rank



Workforce & Education

Employment, Nov 2007	46,795	24
Unemployed, Nov 2007	1,623	39
Percent unemployed, Nov 2007	3.4	94
Percent unemployed, 2006	3.6	96
Percent unemployed, NC, Nov 2007	5.1	
Percent unemployed, NC, 2006	4.8	
Percent high school graduates or higher, 2000	83.2	8
Percent high school graduates or higher, NC, 2000	78.1	
Average SAT score (2400 scale), 2007	1,556	5
Average SAT score (2400 scale), NC, 2007	1,486	
Percent bachelor's degree or higher, 2000	24.1	16
Percent bachelor's degree or higher, NC, 2000	22.5	

Taxes, Sales & Services

Property taxes/\$100 Value ('07-'08)	\$0.4620
Taxable sales (Mil \$, Sept 07)	\$85.1
Taxable sales (Mil \$, FY 06-07)	\$918.7
Pharmacist/10,000 Pop, 2006	8
Physician/10,000 Pop, 2006	22
RN/10,000 Pop, 2006	94
Dentist/10,000 Pop, 2006	5
Tier designation, 2008	3
Partnership Region	Advantage West
Licensed Child Care Facilities, Sept 07	75
Child Care Slots, Sept 07	4,101

Income, Housing & Poverty

Average weekly wage per employee, 2nd Quarter 2007	\$612	24
Median household income, 2005	\$38,582	38
Per capita personal income, 2000	\$27,763	13
Per capita personal income, 2005	\$30,603	18
Per capita personal income, NC, 2006	\$32,234	
Median value of owner-occupied housing units, 2000	\$108,342	9
Median value of owner-occupied housing units, NC, 2000	\$108,300	
Percent in poverty, 2005	11.7	88
Percent in poverty, NC, 2005	14.9	

Notes: Data are the latest available at the date the profile was prepared. Demographics are from U.S. Census. Workforce & Education are from NC Employment Security Commission, U.S. Census, and NC Dept. of Public Instruction respectively; county unemployment rates are seasonally unadjusted. Average wage are from ESC's "Insured Employment and Wages in NC for Private Industry by Sector (2 digit)" which is based on the Current Population Survey." Income, Housing & Poverty are from U.S. Bureau of Economic Analysis and the U.S. Census, respectively. Jobs and Investments are from NC Dept. of Commerce. Closings & Layoffs by effective date are from the NC Employment Security Commission. Employment & Wages are from NCESC's "Insured Employment and Wages in NC for Industry by Sector (2 digit)" series; missing data or * indicates data not available or suppressed for confidentiality reasons. Taxes are from the NC Dept. of Revenue and prior to 7/05 represent gross sales but after are taxable sales. Medical data from the Cecil G. Sheps Center for Health Services Research, UNC-Chapel Hill. **County Ranking 1=highest.

Announced Jobs & Investments

Jobs announced, 2006	50
Jobs announced, Thru Oct 12, 2007	0
Total investment announced, 2006	\$5,000,000
Total investment announced, Thru Oct 12, 2007	\$0

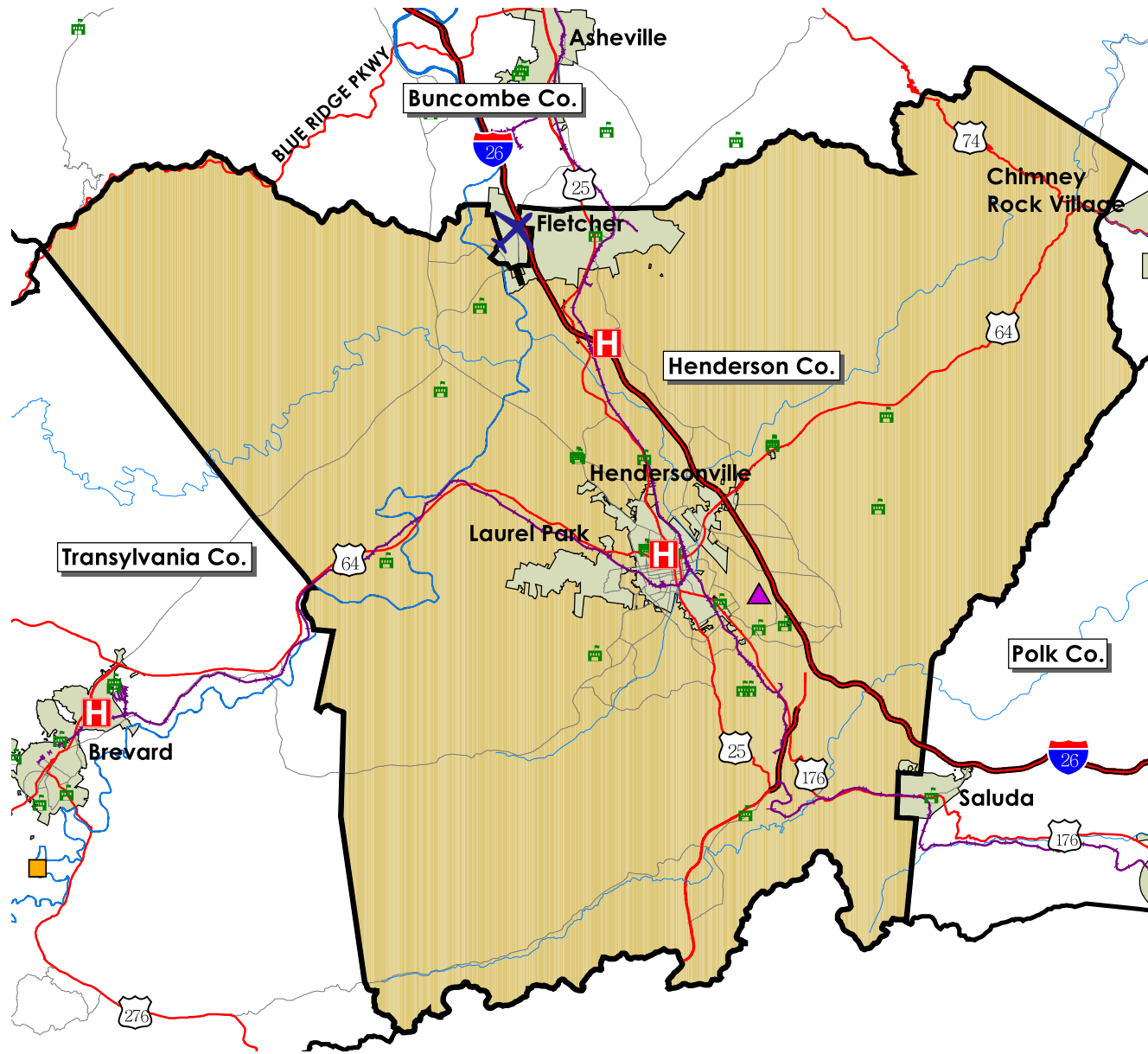
Announced Closings & Layoffs

Number of affected establishments, 2006	3
Number of affected establishments, Thru Dec 2007	2
Job losses, 2006	4
Job losses, Thru Dec 2007	64

Employment and Wages, by Sector (2nd Quarter 2007)

	Henderson			North Carolina		
	Avg Emp	% Total	Avg Wkly Wage	Avg Emp	% Total	Avg Wkly Wage
Total All Industries	36,736	100.0	\$612	4,070,849	100.0	\$718
Total Government	5,545	15.1	\$699	678,349	16.7	\$754
Total Private Industry	31,191	84.9	\$596	3,392,501	83.3	\$711
Agriculture Forestry Fishing & Hunting	686	1.9	\$449	30,294	0.7	\$517
Mining	0	0.0	\$0	4,055	0.1	\$1,176
Utilities	63	0.2	\$1,113	13,939	0.3	\$1,378
Construction	3,171	8.6	\$629	255,709	6.0	\$729
Manufacturing	6,089	16.6	\$839	537,281	13.2	\$876
Wholesale Trade	1,099	3.0	\$714	182,823	4.5	\$1,021
Retail Trade	5,065	13.8	\$498	462,301	11.4	\$468
Transportation and Warehousing	611	1.7	\$733	115,772	2.8	\$721
Information	390	1.1	\$709	72,926	1.8	\$1,025
Finance and Insurance	783	2.1	\$910	152,965	3.8	\$1,183
Real Estate and Rental and Leasing	316	0.9	\$534	54,786	1.3	\$673
Professional and Technical Services	825	2.2	\$713	182,439	4.5	\$1,082
Management of Companies and Enterprises	238	0.6	\$745	69,658	1.7	\$1,374
Administrative and Waste Services	1,720	4.7	\$415	243,995	6.0	\$505
Educational Services	389	1.1	\$486	57,097	1.4	\$711
Health Care and Social Assistance	4,354	11.9	\$660	434,459	10.7	\$688
Arts, Entertainment and Recreation	517	1.4	\$427	53,965	1.3	\$551
Accommodation and Food Services	3,624	9.9	\$258	346,693	8.5	\$260
Other Services Ex. Public Admin	1,034	2.8	\$389	103,559	2.5	\$475
Public Administration				228,584	5.6	\$765
Unclassified	196	0.5	\$465	17,783	0.4	\$651

Trends Profile Map Henderson County



Legend

-  Public Schools
-  Airports
-  Hospitals
-  Colleges and Universities
-  Community Colleges
-  Rail Lines
-  Interstate highways
-  US Highways
-  State and County Highways
-  Major Rivers and Streams
-  Major Waterbodies
-  Municipal Boundaries

0 5 Miles



Henderson County

Employment Characteristics

Reporting Quarter: 4th Quarter 2007

County Profile Contact (919) 715-6374

Commerce Economic Development Contact (919) 733-4977

Employment Security Commission (919) 733-2936

Top Manufacturers (2nd Quarter 2007)

MERITOR HEAVY VEHICLE SYSTEMS LLC
WILSONART INTERNATIONAL INC
GE LIGHTING SYSTEMS INC
CONTINENTAL TEVES INC
U P M-RAFLATAC INC
BORG WARNER THERMAL SYSTEMS
KIMBERLY CLARK CORP
KYOCERA INDUSTRIAL CERAMICS
PRINTPACK INC
INTERNATIONAL PAPER CO INC

Employment Range

500-999
500-999
500-999
250-499
250-499
250-499
100-249
100-249
100-249
100-249



Top Non-Manufacturing Employers (2nd Quarter 2007)

HENDERSON CO BOARD OF PUBLIC ED
MARGARET R PARDEE MEMORIAL HOSP
PARK RIDGE HOSPITAL
COUNTY OF HENDERSON
INGLES MARKETS INC
WAL-MART ASSOCIATES INC
PINNACLE STAFFING INC
BLUE RIDGE COMMUNITY COLLEGE
VAN WINGERDEN INTERNATIONAL INC
CITY OF HENDERSONVILLE

Employment Range

1,000+
1,000+
500-999
500-999
500-999
250-499
250-499
250-499
250-499
250-499

Industry

Education and Health Services
Education and Health Services
Education and Health Services
Public Administration
Trade, Transportation, and Utilities
Trade, Transportation, and Utilities
Professional and Business Services
Education and Health Services
Trade, Transportation, and Utilities
Public Administration