

Madison County (NC)

2nd Quarter 2008



County Profile Contact (919) 715-6374

Commerce Economic Development Contact (919) 733-4977

Demographics

Population & Growth

	Population	Annual Growth Rate
2012 Total Population	21,966	0.9%
2007 Total Population	21,042	1.0%
2000 Total Population	19,635	
July 2006 Certified Population Estimate	20,449	
July 2006 Certified Population Growth	-64	
July 2006 Certified Net Migration	878	

Urban/Rural Representation

		Urban/Rural Percent
2000 Total Population: Urban - inside Urbanized Area	0	0.0%
2000 Total Population: Urban - inside Urbanized Clusters	0	0.0%
2000 Total Population: Rural - Farm	1,273	6.5%
2000 Total Population: Rural - Nonfarm	18,362	93.5%

Estimated Population by Age

		Pop by Age, % Est.
2012 Median Age	43	
2007 Median Age	41	
2000 Median Age	39	
2007 Total Pop 0-19	5,100	24.2%
2007 Total Pop 20-29	2,407	11.4%
2007 Total Pop 30-39	2,715	12.9%
2007 Total Pop 40-49	2,911	13.8%
2007 Total Pop 50-59	3,199	15.2%
2007 Total Pop 60+	4,710	22.4%

Working Commuters, 2000 Census

Workers, Travel Time

Avg Travel Time, Not at Home	30
Workers Not Working at Home	8,252
Travel Time to Work: < 5 minutes	288
Travel Time to Work: 5-9 minutes	692
Travel Time to Work: 10-14 minutes	926
Travel Time to Work: 15-19 minutes	766
Travel Time to Work: 20-24 minutes	911
Travel Time to Work: 25-29 minutes	603
Travel Time to Work: 30-34 minutes	1,690
Travel Time to Work: 35-39 minutes	274
Travel Time to Work: 40-44 minutes	283
Travel Time to Work: 45-59 minutes	1,035
Travel Time to Work: 60-89 minutes	506
Travel Time to Work: 90+ minutes	278

Workers, By Transportation

Worker Mode, Base	8,570
Work at Home	318
Drove Car/Truck/Van Alone	6,767
Carpooled Car/Truck/Van	1,161
Bus/Trolley Bus	13
Streetcar/Trolley Car	0
Subway/Elevated	0
Railroad	0
Ferryboat	0
Taxicab	0
Motorcycle	7
Bicycle	15
Walked	221
Other Means	68

Travel to Work	Commuters	Percent by Residence
Worked in State/County of Residence	3,923	45.8%
Worked in State/Outside County of Residence	4,372	51.0%
Worked Outside State of Residence	275	3.2%

Education

		Pop Age 25+, %
2007 Average SAT score	1501	
2007 Percent of Graduates taking SAT	50%	
2005-06 Higher Education Completions	218	
2005-06 Higher Education Total Enrollment	6,280	
2000 Education Attainment - At Least High School Graduate	9,295	69.3%
2000 Education Attainment - At Least Bachelor's Degree	2,160	16.1%

Housing

		Growth / Appreciation Est
2012 Total Housing	11,388	6.1%
2007 Total Housing	10,729	
2012 Median Value of Owner Occupied Housing	168,040	20.1%
2007 Median Value of Owner Occupied Housing	139,892	
2007 Owner Occupied Housing	6,848	
2007 Renter Occupied Housing	1,954	
2007 Total Households	8,802	
2000 Median Year Housing Structure Built	1,975	

Income

		Growth Estimated
2012 Median Family Income	\$51,602	14.5%
2007 Median Family Income	\$45,086	21.0%
2000 Median Family Income	\$37,258	
2012 Median Household Income	\$42,117	13.0%
2007 Median Household Income	\$37,284	20.5%
2000 Median Household Income	\$30,951	
2007 Median Disposable Income	\$29,984	
2007-2012 Per Capita Income: Annual Compound Growth Rate %		3.1%
2012 Per Capita Income	\$23,308	16.3%
2007 Per Capita Income	\$20,049	24.7%
2000 Per Capita Income	\$16,076	
2000 Total Pop with Income Below Poverty Level	2,880	
2000 Percent of Pop with Income Below Poverty Level	15.4%	

Employment / Unemployment

	Year to Date	2007 Annual
Employment (YTD2008Q1)	9,507	9,590
Unemployment (YTD2008Q1)	540	389
Unemployment Rate (YTD2008Q1)	5.4%	3.9%
Announced Job Creation (YTD2008Q1)	.	.
Total Announced Investments (\$mil)(YTD2008Q1)	.	.
Lost Jobs, Closings & Layoffs (YTD2008Q2)	.	0
Establishment Events, Closings & Layoffs (YTD2008Q2)	.	0

Employment / Wages by Industry	2007 3rd Qtr Employment	2006 Annual Employment	2007 3rd Qtr Avg Weekly Wage	2006 Avg Weekly Wage
Total All Industries	2,554	2,495	\$533	\$504
Total Government	601	666	\$656	\$551
Total Private Industry	1,953	1,829	\$495	\$497
Agriculture Forestry Fishing & Hunting	0	0	.	.
Mining	0	0	.	.
Utilities	0	0	.	.
Construction	308	310	\$697	\$535
Manufacturing	410	422	\$703	\$688
Wholesale Trade	63	0	\$480	.
Retail Trade	321	327	\$372	\$361
Transportation and Warehousing	37	117	\$684	\$751
Information	10	5	\$1,398	\$2,754
Finance and Insurance	64	56	\$806	\$804
Real Estate and Rental and Leasing	40	30	\$486	\$852
Professional and Technical Services	61	0	\$556	.
Management of Companies and Enterprises	0	0	.	.
Administrative and Waste Services	0	90	.	\$681
Educational Services	442	504	\$643	\$543
Health Care and Social Assistance	0	0	.	.
Arts, Entertainment and Recreation	199	153	\$318	\$241
Accommodation and Food Services	381	295	\$232	\$238
Other Services Ex. Public Admin	66	51	\$437	\$423
Public Administration	122	125	\$692	\$685
Unclassified	30	10	\$516	\$501

Quality of Life

Taxes

FY2008-09 Property Tax Rate per \$100 Value	\$0.5100
FY2006-07 Annual Taxable Retail Sales (\$mil)	\$54.7
2008 Tier designation	2

Weather

Annual Rainfall	48
Annual Snowfall	14
Average Annual Temperature	59
Average Annual High Temperature	68
Average Annual Low Temperature	44

Commercial/Retail/Industrial

2008 Available Industrial Buildings	3
2006 Establishments: Total Private Industry	678
2006 Establishments: Manufacturing	17

Childcare

May 2008 Licensed Child Care Facilities	13
May 2008 Licensed Child Care Slots	590

Healthcare Providers

2006 Number of Physicians	15
2006 Physicians per 10,000 population	7
2006 RNs per 10,000 population	35
2006 Dentists per 10,000 population	1
2006 Pharmacists per 10,000 population	7

Local Retail Business

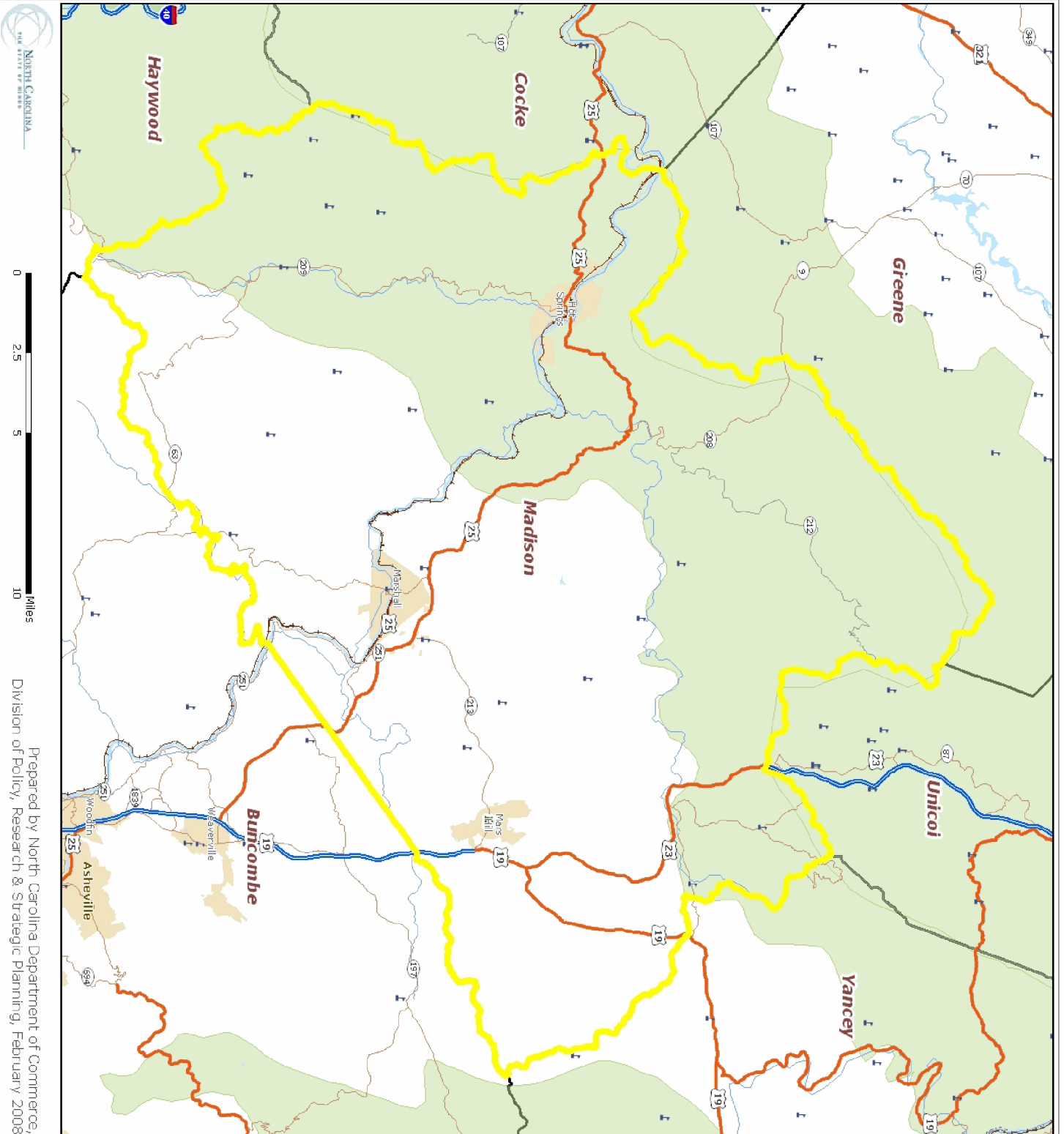
2007 Total Retail Sales (With Food/Drink) (\$mil)	\$132.1
2007 Total Retail Businesses (With Food/Drink)	114
2007 Avg Household Retail Demand (Food/Drink) (\$)	\$20,474

Sources:

ESRI for demographics, working population, educational attainment, housing, income, crime, weather, and retail data. <http://www.esri.com>
 NC Dept. of Education and various state education departments for SAT data by county system. <http://www.ncpublicschools.org>
 US Dept. of Education, National Center for Education Statistics for higher education data. <http://nces.ed.gov/ipeds/>
 NC Commerce for announced new jobs and investment, NC tiers, and number of industrial buildings. <http://www.nccommerce.com/en>
 NC Employment Security Commission for lost jobs and affected establishments data. <http://www.ncesc.com>
 NC Dept. of Health & Human Services for childcare data. <http://www.ncdhhs.gov/>
 UNC Sheps Center for healthcare provider statistics. <http://www.shepscenter.unc.edu/>
 US Bureau of Labor Statistics for employment and unemployment, wages and establishments by industry. <http://www.bls.gov>

Notes:

Data are the latest available at the date the profile was prepared. SAT scores use the new scoring system including a writing test for a perfect score of 2400 and represent county systems. ESRI 2007/2012 data are projections. Some data may be available only for North Carolina. For further details or questions, please check the Data Sources Guide at <https://edis.commerce.state.nc.us/docs/bibliography/dataGuide.htm>.



Prepared by North Carolina Department of Commerce,
Division of Policy, Research & Strategic Planning, February 2008

Legend

- Hospital
- Public University
- Private University
- NC Community Colleges
- School
- Limited Access
- Highway
- Major Road
- Local Road
- Minor Road
- Other Road
- Ramp
- Ferry
- Pedestrian Way
- Railroads (Local)
- Airport Area
- Stream
- Intermittent Stream
- Canal
- Dam
- National Park or Forest
- State Park or Forest
- Local Park or Recreation Area
- Municipal Boundaries