

McDowell County

Reporting Quarter: 4th Quarter 2007

County Profile Contact (919) 715-6374
Economic Development Contact (919) 733-4977

Demographics

Certified Population, July 2006	43,636	57
Population, 2000 Census	42,151	57
Population, 1990 Census	35,681	57
Percent population change, 1990-2000	18.1	41
Percent population change, NC, 1990-2000	21.3	

County Rank



Workforce & Education

Employment, Nov 2007	19,948	58
Unemployed, Nov 2007	1,133	54
Percent unemployed, Nov 2007	5.4	32
Percent unemployed, 2006	6.2	19
Percent unemployed, NC, Nov 2007	5.1	
Percent unemployed, NC, 2006	4.8	
Percent high school graduates or higher, 2000	70.2	68
Percent high school graduates or higher, NC, 2000	78.1	
Average SAT score (2400 scale), 2007	1,453	44
Average SAT score (2400 scale), NC, 2007	1,486	
Percent bachelor's degree or higher, 2000	9.0	96
Percent bachelor's degree or higher, NC, 2000	22.5	

Taxes, Sales & Services

Property taxes/\$100 Value ('07-'08)	\$0.5500
Taxable sales (Mil \$, Sept 07)	\$22.5
Taxable sales (Mil \$, FY 06-07)	\$237.2
Pharmacist/10,000 Pop, 2006	5
Physician/10,000 Pop, 2006	7
RN/10,000 Pop, 2006	60
Dentist/10,000 Pop, 2006	2
Tier designation, 2008	1
Partnership Region	Advantage West
Licensed Child Care Facilities, Sept 07	31
Child Care Slots, Sept 07	1,914

Income, Housing & Poverty

Average weekly wage per employee, 2nd Quarter 2007	\$540	60
Median household income, 2005	\$36,048	53
Per capita personal income, 2000	\$21,050	72
Per capita personal income, 2005	\$23,113	88
Per capita personal income, NC, 2006	\$32,234	
Median value of owner-occupied housing units, 2000	\$64,945	81
Median value of owner-occupied housing units, NC, 2000	\$108,300	
Percent in poverty, 2005	13.2	75
Percent in poverty, NC, 2005	14.9	

Notes: Data are the latest available at the date the profile was prepared. Demographics are from U.S. Census. Workforce & Education are from NC Employment Security Commission, U.S. Census, and NC Dept. of Public Instruction respectively; county unemployment rates are seasonally unadjusted. Average wage are from ESC's "Insured Employment and Wages in NC for Private Industry by Sector (2 digit)" which is based on the Current Population Survey." Income, Housing & Poverty are from U.S. Bureau of Economic Analysis and the U.S. Census, respectively. Jobs and Investments are from NC Dept. of Commerce. Closings & Layoffs by effective date are from the NC Employment Security Commission. Employment & Wages are from NCESC's "Insured Employment and Wages in NC for Industry by Sector (2 digit)" series; missing data or * indicates data not available or suppressed for confidentiality reasons. Taxes are from the NC Dept. of Revenue and prior to 7/05 represent gross sales but after are taxable sales. Medical data from the Cecil G. Sheps Center for Health Services Research, UNC-Chapel Hill. **County Ranking 1=highest.

Announced Jobs & Investments

Jobs announced, 2006	25
Jobs announced, Thru Oct 12, 2007	0
Total investment announced, 2006	\$1,200,000
Total investment announced, Thru Oct 12, 2007	\$0

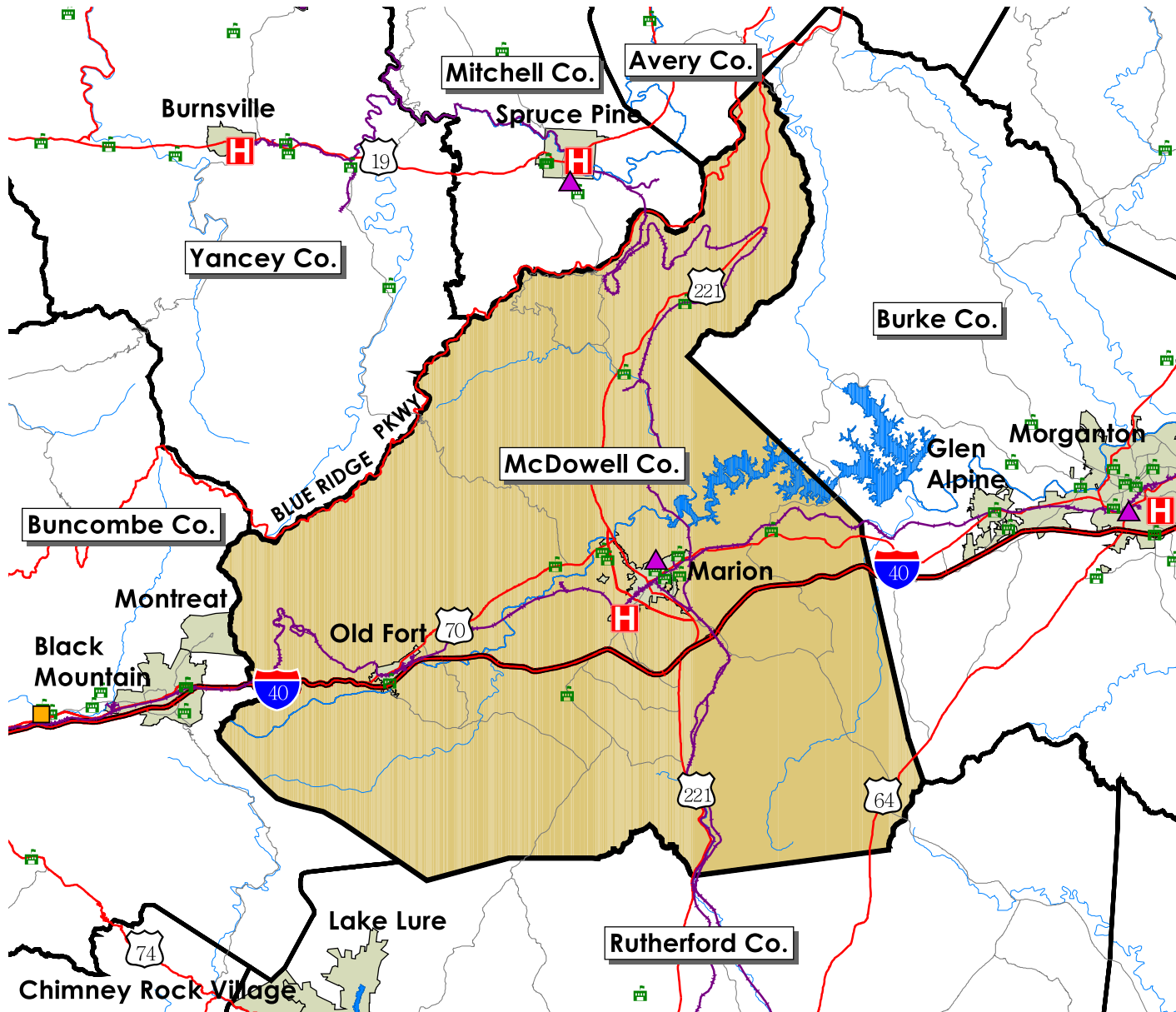
Announced Closings & Layoffs

Number of affected establishments, 2006	3
Number of affected establishments, Thru Dec 2007	1
Job losses, 2006	86
Job losses, Thru Dec 2007	34

Employment and Wages, by Sector (2nd Quarter 2007)

	McDowell			North Carolina		
	Avg Emp	% Total	Avg Wkly Wage	Avg Emp	% Total	Avg Wkly Wage
Total All Industries	16,650	100.0	\$540	4,070,849	100.0	\$718
Total Government	2,752	16.5	\$568	678,349	16.7	\$754
Total Private Industry	13,898	83.5	\$535	3,392,501	83.3	\$711
Agriculture Forestry Fishing & Hunting	70	0.4	\$488	30,294	0.7	\$517
Mining	0	0.0	\$0	4,055	0.1	\$1,176
Utilities	0	0.0	\$0	13,939	0.3	\$1,378
Construction	820	4.9	\$573	255,709	6.0	\$729
Manufacturing	6,398	38.4	\$650	537,281	13.2	\$876
Wholesale Trade	361	2.2	\$570	182,823	4.5	\$1,021
Retail Trade	1,778	10.7	\$428	462,301	11.4	\$468
Transportation and Warehousing	162	1.0	\$684	115,772	2.8	\$721
Information	61	0.4	\$784	72,926	1.8	\$1,025
Finance and Insurance	174	1.0	\$666	152,965	3.8	\$1,183
Real Estate and Rental and Leasing	92	0.6	\$337	54,786	1.3	\$673
Professional and Technical Services	168	1.0	\$707	182,439	4.5	\$1,082
Management of Companies and Enterprises	0	0.0	\$0	69,658	1.7	\$1,374
Administrative and Waste Services	520	3.1	\$267	243,995	6.0	\$505
Educational Services	0	0.0	\$0	57,097	1.4	\$711
Health Care and Social Assistance	1,354	8.1	\$489	434,459	10.7	\$688
Arts, Entertainment and Recreation	164	1.0	\$344	53,965	1.3	\$551
Accommodation and Food Services	1,150	6.9	\$201	346,693	8.5	\$260
Other Services Ex. Public Admin	343	2.1	\$349	103,559	2.5	\$475
Public Administration				228,584	5.6	\$765
Unclassified	50	0.3	\$537	17,783	0.4	\$651

Trends Profile Map McDowell County



Legend

- Public Schools
- Airports
- Hospitals
- Colleges and Universities
- Community Colleges
- Rail Lines
- Interstate highways
- US Highways
- State and County Highways
- Major Rivers and Streams
- Major Waterbodies
- Municipal Boundaries



McDowell County

Employment Characteristics

Reporting Quarter: 4th Quarter 2007

County Profile Contact (919) 715-6374

Commerce Economic Development Contact (919) 733-4977

Employment Security Commission (919) 733-2936

Top Manufacturers (2nd Quarter 2007)

BAXTER HEALTHCARE CORP	1,000+
COLLINS & AIKMAN CORPORATION	500-999
GALEY & LORD INDUSTRIES LLC	500-999
ETHAN ALLEN OPERATIONS INC	250-499
COLUMBIA CAROLINA CORP	250-499
COATS AMERICAN INC	250-499
ROCK TENN SERVICES INC	250-499
MCC HOLDINGS INC	100-249
RELIANCE ELECTRIC INDUSTRIAL CO	100-249
TILSON MACHINE WORKS INC	100-249

Employment Range



Top Non-Manufacturing Employers (2nd Quarter 2007)

MCDOWELL COUNTY SCHOOLS	1,000+
STATE OF NORTH CAROLINA	500-999
COUNTY OF MCDOWELL	250-499
THE MCDOWELL HOSPITAL INC	250-499
MANPOWER TEMPORARY SERVICES	250-499
MCDOWELL TECHNICAL	100-249
WAL-MART ASSOCIATES INC	100-249
TOM JOHNSON CAMPING CENTER INC	100-249
MCDOWELL NURSING CENTER	100-249
MCDONALDS	100-249

Employment Range

Industry

Education and Health Services
Public Administration
Public Administration
Education and Health Services
Professional and Business Services
Education and Health Services
Trade, Transportation, and Utilities
Trade, Transportation, and Utilities
Education and Health Services
Leisure and Hospitality