

Mitchell County (NC)

2nd Quarter 2008



County Profile Contact (919) 715-6374

Commerce Economic Development Contact (919) 733-4977

Demographics

Population & Growth

	Population	Annual Growth Rate
2012 Total Population	16,578	0.3%
2007 Total Population	16,313	0.5%
2000 Total Population	15,687	
July 2006 Certified Population Estimate	15,894	
July 2006 Certified Population Growth	-245	
July 2006 Certified Net Migration	452	

Urban/Rural Representation

		Urban/Rural Percent
2000 Total Population: Urban - inside Urbanized Area	0	0.0%
2000 Total Population: Urban - inside Urbanized Clusters	0	0.0%
2000 Total Population: Rural - Farm	398	2.5%
2000 Total Population: Rural - Nonfarm	15,289	97.5%

Estimated Population by Age

		Pop by Age, % Est.
2012 Median Age	46	
2007 Median Age	44	
2000 Median Age	42	
2007 Total Pop 0-19	3,431	21.0%
2007 Total Pop 20-29	1,681	10.3%
2007 Total Pop 30-39	2,070	12.7%
2007 Total Pop 40-49	2,403	14.7%
2007 Total Pop 50-59	2,450	15.0%
2007 Total Pop 60+	4,278	26.2%

Working Commuters, 2000 Census

Workers, Travel Time

Avg Travel Time, Not at Home	25
Workers Not Working at Home	6,820
Travel Time to Work: < 5 minutes	265
Travel Time to Work: 5-9 minutes	879
Travel Time to Work: 10-14 minutes	1,220
Travel Time to Work: 15-19 minutes	1,009
Travel Time to Work: 20-24 minutes	799
Travel Time to Work: 25-29 minutes	441
Travel Time to Work: 30-34 minutes	829
Travel Time to Work: 35-39 minutes	170
Travel Time to Work: 40-44 minutes	166
Travel Time to Work: 45-59 minutes	594
Travel Time to Work: 60-89 minutes	259
Travel Time to Work: 90+ minutes	189

Workers, By Transportation

Worker Mode, Base	6,925
Work at Home	105
Drove Car/Truck/Van Alone	5,262
Carpooled Car/Truck/Van	1,460
Bus/Trolley Bus	0
Streetcar/Trolley Car	0
Subway/Elevated	0
Railroad	0
Ferryboat	0
Taxicab	0
Motorcycle	0
Bicycle	0
Walked	74
Other Means	24

Travel to Work

	Commuters	Percent by Residence
Worked in State/County of Residence	4,813	69.5%
Worked in State/Outside County of Residence	1,938	28.0%
Worked Outside State of Residence	174	2.5%

Education

		Pop Age 25+, %
2007 Average SAT score	1508	
2007 Percent of Graduates taking SAT	42%	
2005-06 Higher Education Completions	520	
2005-06 Higher Education Total Enrollment	.	
2000 Education Attainment - At Least High School Graduate	7,761	68.6%
2000 Education Attainment - At Least Bachelor's Degree	1,381	12.2%

Housing

		Growth / Appreciation Est
2012 Total Housing	8,593	2.8%
2007 Total Housing	8,361	
2012 Median Value of Owner Occupied Housing	122,468	16.1%
2007 Median Value of Owner Occupied Housing	105,527	
2007 Owner Occupied Housing	5,686	
2007 Renter Occupied Housing	1,282	
2007 Total Households	6,968	
2000 Median Year Housing Structure Built	1,973	

Income

		Growth Estimated
2012 Median Family Income	\$50,687	14.6%
2007 Median Family Income	\$44,235	21.2%
2000 Median Family Income	\$36,494	
2012 Median Household Income	\$41,497	13.5%
2007 Median Household Income	\$36,566	19.9%
2000 Median Household Income	\$30,494	
2007 Median Disposable Income	\$29,739	
2007-2012 Per Capita Income: Annual Compound Growth Rate %		2.9%
2012 Per Capita Income	\$22,986	15.6%
2007 Per Capita Income	\$19,882	24.8%
2000 Per Capita Income	\$15,933	
2000 Total Pop with Income Below Poverty Level	2,142	
2000 Percent of Pop with Income Below Poverty Level	13.8%	

Employment / Unemployment

	Year to Date	2007 Annual
Employment (YTD2008Q1)	6,629	6,998
Unemployment (YTD2008Q1)	581	520
Unemployment Rate (YTD2008Q1)	8.0%	6.9%
Announced Job Creation (YTD2008Q1)	120	70
Total Announced Investments (\$mil)(YTD2008Q1)	\$1	\$2
Lost Jobs, Closings & Layoffs (YTD2008Q2)	9	64
Establishment Events, Closings & Layoffs (YTD2008Q2)	2	8

Employment / Wages by Industry	2007 3rd Qtr Employment	2006 Annual Employment	2007 3rd Qtr Avg Weekly Wage	2006 Avg Weekly Wage
Total All Industries	4,798	5,268	\$500	\$510
Total Government	928	1,017	\$556	\$522
Total Private Industry	3,870	4,251	\$487	\$487
Agriculture Forestry Fishing & Hunting	0	0	.	.
Mining	0	0	.	.
Utilities	17	17	\$1,217	\$1,194
Construction	397	421	\$452	\$441
Manufacturing	397	756	\$597	\$526
Wholesale Trade	139	128	\$534	\$581
Retail Trade	803	763	\$359	\$368
Transportation and Warehousing	234	250	\$675	\$663
Information	24	24	\$466	\$556
Finance and Insurance	139	142	\$567	\$573
Real Estate and Rental and Leasing	40	47	\$259	\$1,078
Professional and Technical Services	78	77	\$421	\$463
Management of Companies and Enterprises	34	31	\$831	\$796
Administrative and Waste Services	112	97	\$494	\$425
Educational Services	510	557	\$564	\$506
Health Care and Social Assistance	882	787	\$638	\$574
Arts, Entertainment and Recreation	111	110	\$312	\$257
Accommodation and Food Services	288	431	\$218	\$207
Other Services Ex. Public Admin	87	85	\$336	\$359
Public Administration	483	521	\$494	\$477
Unclassified	24	24	\$476	\$309

Quality of Life

Taxes

FY2008-09 Property Tax Rate per \$100 Value	\$0.5200
FY2006-07 Annual Taxable Retail Sales (\$mil)	\$125.3
2008 Tier designation	1

Weather

Annual Rainfall	48
Annual Snowfall	30
Average Annual Temperature	60
Average Annual High Temperature	69
Average Annual Low Temperature	45

Commercial/Retail/Industrial

2008 Available Industrial Buildings	3
2006 Establishments: Total Private Industry	813
2006 Establishments: Manufacturing	29

Childcare

May 2008 Licensed Child Care Facilities	14
May 2008 Licensed Child Care Slots	431

Healthcare Providers

2006 Number of Physicians	29
2006 Physicians per 10,000 population	18
2006 RNs per 10,000 population	96
2006 Dentists per 10,000 population	4
2006 Pharmacists per 10,000 population	10

Local Retail Business

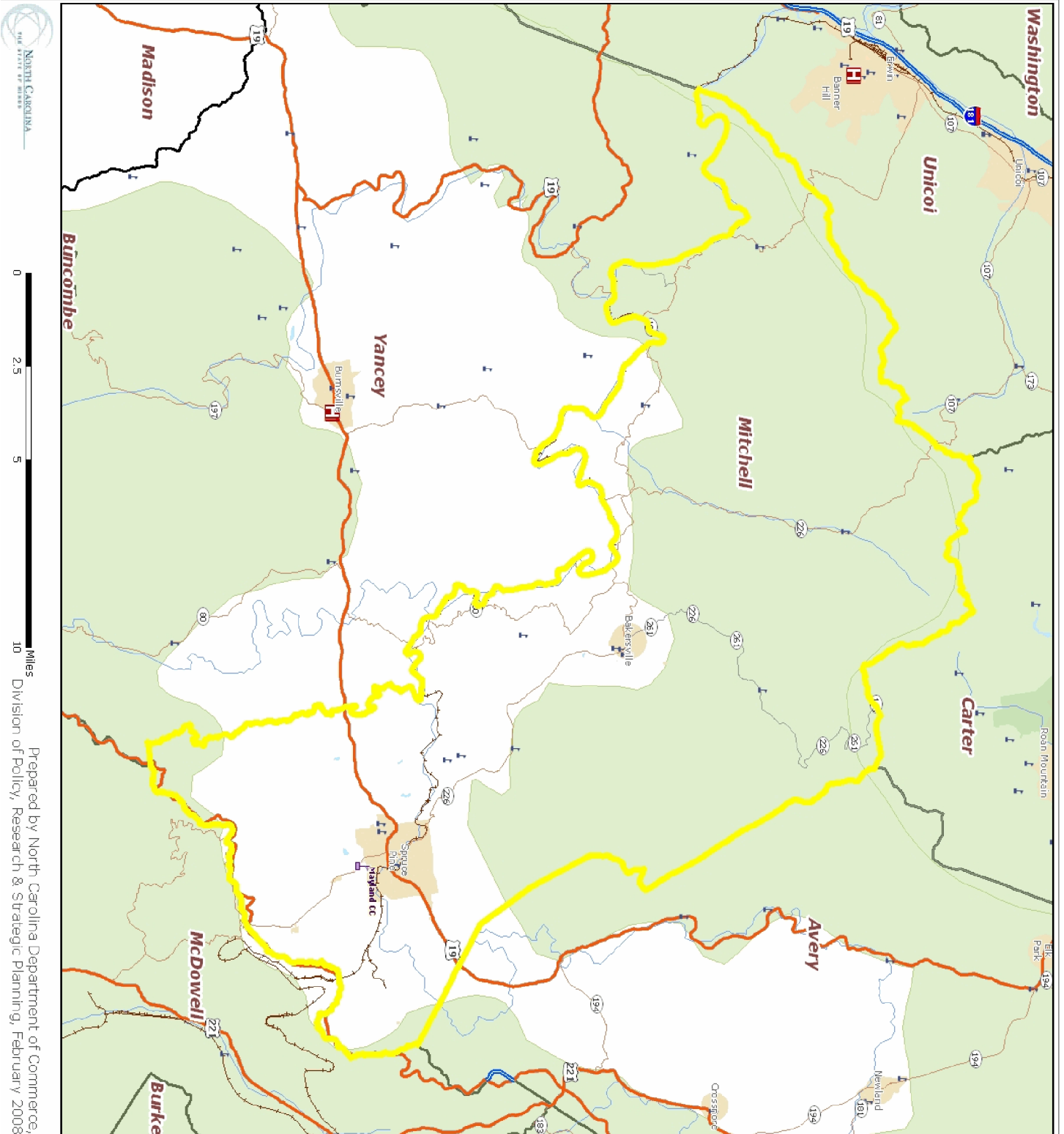
2007 Total Retail Sales (With Food/Drink) (\$mil)	\$204.3
2007 Total Retail Businesses (With Food/Drink)	165
2007 Avg Household Retail Demand (Food/Drink) (\$)	\$20,822

Sources:

ESRI for demographics, working population, educational attainment, housing, income, crime, weather, and retail data. <http://www.esri.com>
 NC Dept. of Education and various state education departments for SAT data by county system. <http://www.ncpublicschools.org>
 US Dept. of Education, National Center for Education Statistics for higher education data. <http://nces.ed.gov/ipeds/>
 NC Commerce for announced new jobs and investment, NC tiers, and number of industrial buildings. <http://www.nccommerce.com/en>
 NC Employment Security Commission for lost jobs and affected establishments data. <http://www.ncesc.com>
 NC Dept. of Health & Human Services for childcare data. <http://www.ncdhhs.gov/>
 UNC Sheps Center for healthcare provider statistics. <http://www.shepscenter.unc.edu/>
 US Bureau of Labor Statistics for employment and unemployment, wages and establishments by industry. <http://www.bls.gov>

Notes:

Data are the latest available at the date the profile was prepared. SAT scores use the new scoring system including a writing test for a perfect score of 2400 and represent county systems. ESRI 2007/2012 data are projections. Some data may be available only for North Carolina. For further details or questions, please check the Data Sources Guide at <https://edis.commerce.state.nc.us/docs/bibliography/dataGuide.htm>.



Legend

- Hospital
- Public University
- Private University
- NC Community Colleges
- School
- Limited Access
- Highway
- Major Road
- Local Road
- Minor Road
- Other Road
- Ramp
- Ferry
- Pedestrian Way
- Railroads (Local)
- Airport Area
- Stream
- Intermittent Stream
- Canal
- Dam
- National Park or Forest
- State Park or Forest
- Local Park or Recreation Area
- Municipal Boundaries

0 2.5 5 10 Miles
 Prepared by North Carolina Department of Commerce, Division of Policy, Research & Strategic Planning, February 2008