

Polk County

Reporting Quarter: 4th Quarter 2007

County Profile Contact (919) 715-6374
Economic Development Contact (919) 733-4977

Demographics

Certified Population, July 2006	19,088	84
Population, 2000 Census	18,324	83
Population, 1990 Census	14,458	85
Percent population change, 1990-2000	26.7	19
Percent population change, NC, 1990-2000	21.3	

County Rank



Workforce & Education

Employment, Nov 2007	9,291	80
Unemployed, Nov 2007	325	90
Percent unemployed, Nov 2007	3.4	94
Percent unemployed, 2006	3.6	96
Percent unemployed, NC, Nov 2007	5.1	
Percent unemployed, NC, 2006	4.8	
Percent high school graduates or higher, 2000	80.6	19
Percent high school graduates or higher, NC, 2000	78.1	
Average SAT score (2400 scale), 2007	1,532	10
Average SAT score (2400 scale), NC, 2007	1,486	
Percent bachelor's degree or higher, 2000	25.7	13
Percent bachelor's degree or higher, NC, 2000	22.5	

Taxes, Sales & Services

Property taxes/\$100 Value ('07-'08)	\$0.6800
Taxable sales (Mil \$, Sept 07)	\$7.0
Taxable sales (Mil \$, FY 06-07)	\$69.6
Pharmacist/10,000 Pop, 2006	6
Physician/10,000 Pop, 2006	13
RN/10,000 Pop, 2006	80
Dentist/10,000 Pop, 2006	4
Tier designation, 2008	2
Partnership Region	Advantage West
Licensed Child Care Facilities, Sept 07	14
Child Care Slots, Sept 07	810

Income, Housing & Poverty

Average weekly wage per employee, 2nd Quarter 2007	\$550	54
Median household income, 2005	\$37,864	42
Per capita personal income, 2000	\$30,774	8
Per capita personal income, 2005	\$36,528	5
Per capita personal income, NC, 2006	\$32,234	
Median value of owner-occupied housing units, 2000	\$102,497	18
Median value of owner-occupied housing units, NC, 2000	\$108,300	
Percent in poverty, 2005	11.3	91
Percent in poverty, NC, 2005	14.9	

Notes: Data are the latest available at the date the profile was prepared. Demographics are from U.S. Census. Workforce & Education are from NC Employment Security Commission, U.S. Census, and NC Dept. of Public Instruction respectively; county unemployment rates are seasonally unadjusted. Average wage are from ESC's "Insured Employment and Wages in NC for Private Industry by Sector (2 digit)" which is based on the Current Population Survey." Income, Housing & Poverty are from U.S. Bureau of Economic Analysis and the U.S. Census, respectively. Jobs and Investments are from NC Dept. of Commerce. Closings & Layoffs by effective date are from the NC Employment Security Commission. Employment & Wages are from NCESC's "Insured Employment and Wages in NC for Industry by Sector (2 digit)" series; missing data or * indicates data not available or suppressed for confidentiality reasons. Taxes are from the NC Dept. of Revenue and prior to 7/05 represent gross sales but after are taxable sales. Medical data from the Cecil G. Sheps Center for Health Services Research, UNC-Chapel Hill. **County Ranking 1=highest.

Announced Jobs & Investments

Jobs announced, 2006	0
Jobs announced, Thru Oct 12, 2007	28
Total investment announced, 2006	\$0
Total investment announced, Thru Oct 12, 2007	\$820,000

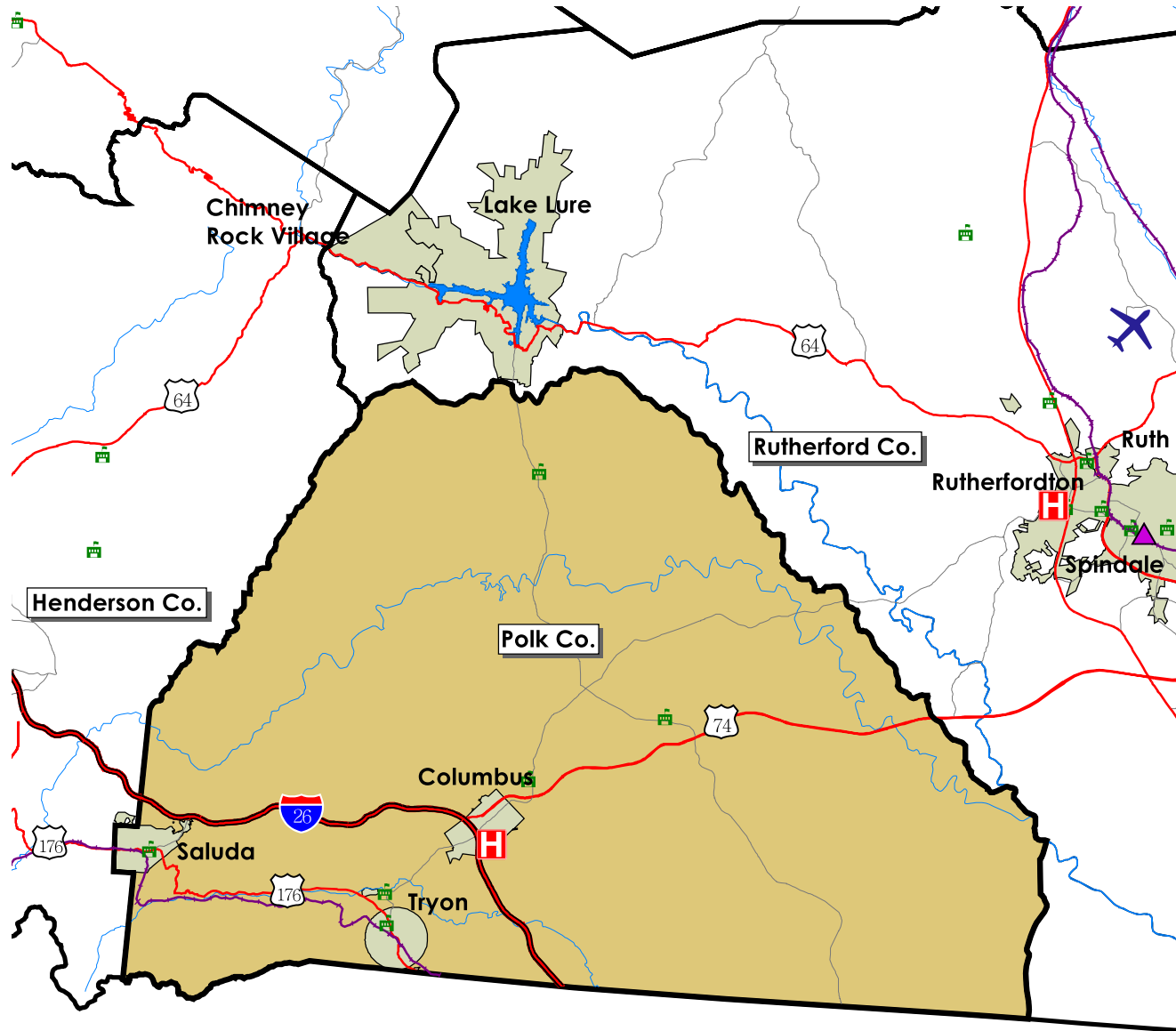
Announced Closings & Layoffs

Number of affected establishments, 2006	0
Number of affected establishments, Thru Dec 2007	1
Job losses, 2006	0
Job losses, Thru Dec 2007	50

Employment and Wages, by Sector (2nd Quarter 2007)

	Polk			North Carolina		
	Avg Emp	% Total	Avg Wkly Wage	Avg Emp	% Total	Avg Wkly Wage
Total All Industries	5,219	100.0	\$550	4,070,849	100.0	\$718
Total Government	927	17.8	\$592	678,349	16.7	\$754
Total Private Industry	4,292	82.2	\$541	3,392,501	83.3	\$711
Agriculture Forestry Fishing & Hunting	111	2.1	\$482	30,294	0.7	\$517
Mining	0	0.0	\$0	4,055	0.1	\$1,176
Utilities	0	0.0	\$0	13,939	0.3	\$1,378
Construction	427	8.2	\$587	255,709	6.0	\$729
Manufacturing	628	12.0	\$583	537,281	13.2	\$876
Wholesale Trade	86	1.6	\$941	182,823	4.5	\$1,021
Retail Trade	450	8.6	\$422	462,301	11.4	\$468
Transportation and Warehousing	7	0.1	\$506	115,772	2.8	\$721
Information	56	1.1	\$487	72,926	1.8	\$1,025
Finance and Insurance	115	2.2	\$2,058	152,965	3.8	\$1,183
Real Estate and Rental and Leasing	57	1.1	\$564	54,786	1.3	\$673
Professional and Technical Services	151	2.9	\$802	182,439	4.5	\$1,082
Management of Companies and Enterprises	0	0.0	\$0	69,658	1.7	\$1,374
Administrative and Waste Services	95	1.8	\$391	243,995	6.0	\$505
Educational Services	17	0.3	\$325	57,097	1.4	\$711
Health Care and Social Assistance	1,499	28.7	\$485	434,459	10.7	\$688
Arts, Entertainment and Recreation	81	1.6	\$283	53,965	1.3	\$551
Accommodation and Food Services	365	7.0	\$220	346,693	8.5	\$260
Other Services Ex. Public Admin	109	2.1	\$507	103,559	2.5	\$475
Public Administration				228,584	5.6	\$765
Unclassified	36	0.7	\$765	17,783	0.4	\$651

Trends Profile Map Polk County



Legend

-  Public Schools
-  Airports
-  Hospitals
-  Colleges and Universities
-  Community Colleges
-  Rail Lines
-  Interstate highways
-  US Highways
-  State and County Highways
-  Major Rivers and Streams
-  Major Waterbodies
-  Municipal Boundaries



Map prepared by the North Carolina Department of Commerce,
Division of Policy, Research & Strategic Planning November 2003.

