

Rutherford County

Reporting Quarter: 4th Quarter 2007

County Profile Contact (919) 715-6374
Economic Development Contact (919) 733-4977

Demographics

Certified Population, July 2006	63,177	40
Population, 2000 Census	62,901	38
Population, 1990 Census	56,956	37
Percent population change, 1990-2000	10.4	75
Percent population change, NC, 1990-2000	21.3	

County Rank



Workforce & Education

Employment, Nov 2007	27,475	42
Unemployed, Nov 2007	1,693	36
Percent unemployed, Nov 2007	5.8	21
Percent unemployed, 2006	7.9	3
Percent unemployed, NC, Nov 2007	5.1	
Percent unemployed, NC, 2006	4.8	
Percent high school graduates or higher, 2000	70.4	67
Percent high school graduates or higher, NC, 2000	78.1	
Average SAT score (2400 scale), 2007	1,413	63
Average SAT score (2400 scale), NC, 2007	1,486	
Percent bachelor's degree or higher, 2000	12.5	60
Percent bachelor's degree or higher, NC, 2000	22.5	

Taxes, Sales & Services

Property taxes/\$100 Value ('07-'08)	\$0.5300
Taxable sales (Mil \$, Sept 07)	\$34.8
Taxable sales (Mil \$, FY 06-07)	\$396.3
Pharmacist/10,000 Pop, 2006	7
Physician/10,000 Pop, 2006	13
RN/10,000 Pop, 2006	70
Dentist/10,000 Pop, 2006	3
Tier designation, 2008	1
Partnership Region	Advantage West
Licensed Child Care Facilities, Sept 07	65
Child Care Slots, Sept 07	3,242

Income, Housing & Poverty

Average weekly wage per employee, 2nd Quarter 2007	\$532	69
Median household income, 2005	\$34,058	67
Per capita personal income, 2000	\$21,304	67
Per capita personal income, 2005	\$24,496	71
Per capita personal income, NC, 2006	\$32,234	
Median value of owner-occupied housing units, 2000	\$71,387	70
Median value of owner-occupied housing units, NC, 2000	\$108,300	
Percent in poverty, 2005	16.3	47
Percent in poverty, NC, 2005	14.9	

Notes: Data are the latest available at the date the profile was prepared. Demographics are from U.S. Census. Workforce & Education are from NC Employment Security Commission, U.S. Census, and NC Dept. of Public Instruction respectively; county unemployment rates are seasonally unadjusted. Average wage are from ESC's "Insured Employment and Wages in NC for Private Industry by Sector (2 digit)" which is based on the Current Population Survey." Income, Housing & Poverty are from U.S. Bureau of Economic Analysis and the U.S. Census, respectively. Jobs and Investments are from NC Dept. of Commerce. Closings & Layoffs by effective date are from the NC Employment Security Commission. Employment & Wages are from NCESC's "Insured Employment and Wages in NC for Industry by Sector (2 digit)" series; missing data or * indicates data not available or suppressed for confidentiality reasons. Taxes are from the NC Dept. of Revenue and prior to 7/05 represent gross sales but after are taxable sales. Medical data from the Cecil G. Sheps Center for Health Services Research, UNC-Chapel Hill. **County Ranking 1=highest.

Announced Jobs & Investments

Jobs announced, 2006	651
Jobs announced, Thru Oct 12, 2007	250
Total investment announced, 2006	\$57,767,500
Total investment announced, Thru Oct 12, 2007	\$13,155,000

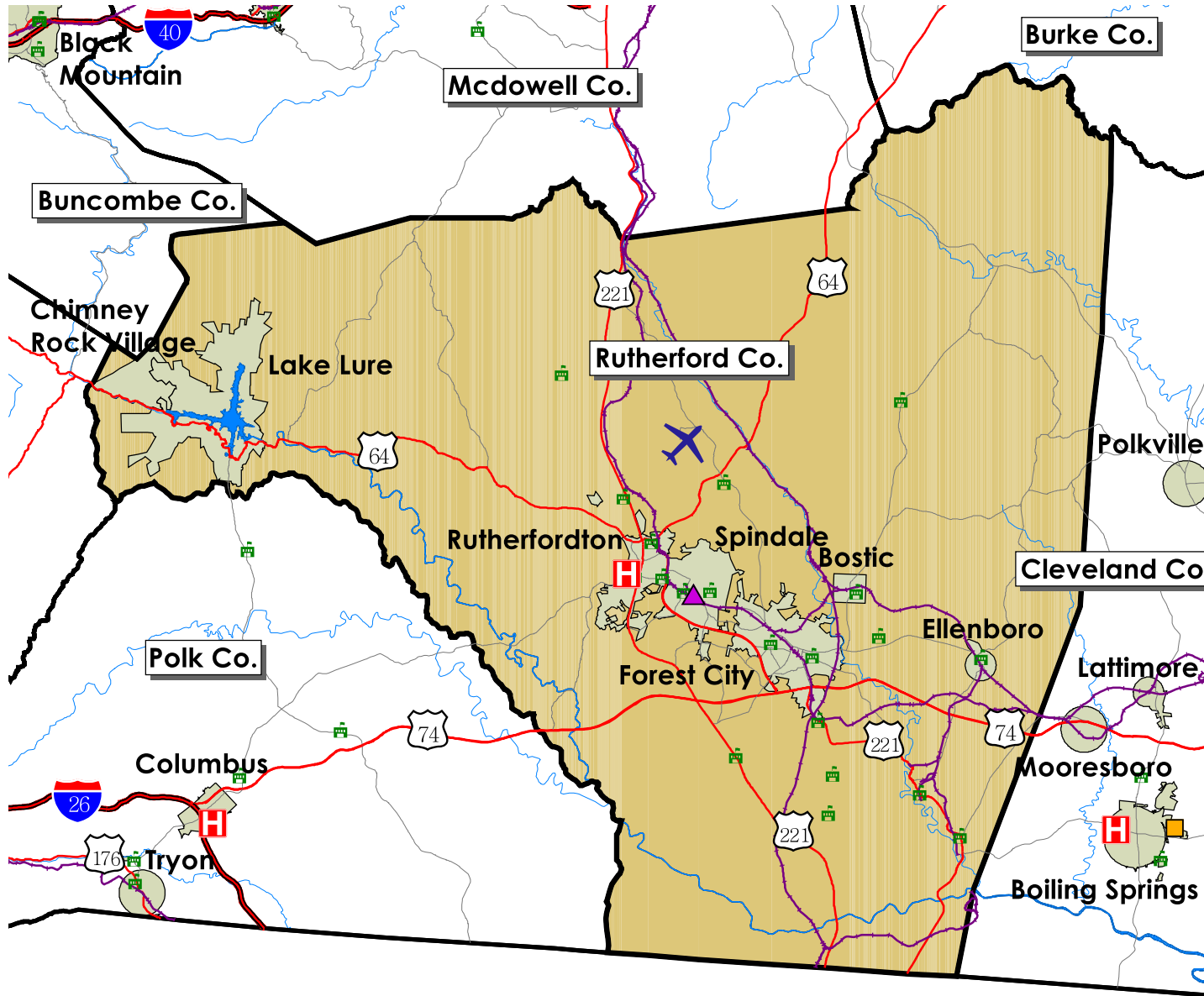
Announced Closings & Layoffs

Number of affected establishments, 2006	3
Number of affected establishments, Thru Dec 2007	1
Job losses, 2006	105
Job losses, Thru Dec 2007	2

Employment and Wages, by Sector (2nd Quarter 2007)

	Rutherford			North Carolina		
	Avg Emp	% Total	Avg Wkly Wage	Avg Emp	% Total	Avg Wkly Wage
Total All Industries	22,940	100.0	\$532	4,070,849	100.0	\$718
Total Government	3,580	15.6	\$578	678,349	16.7	\$754
Total Private Industry	19,360	84.4	\$523	3,392,501	83.3	\$711
Agriculture Forestry Fishing & Hunting	54	0.2	\$478	30,294	0.7	\$517
Mining	0	0.0	\$0	4,055	0.1	\$1,176
Utilities	137	0.6	\$1,208	13,939	0.3	\$1,378
Construction	1,270	5.5	\$576	255,709	6.0	\$729
Manufacturing	4,127	18.0	\$652	537,281	13.2	\$876
Wholesale Trade	532	2.3	\$661	182,823	4.5	\$1,021
Retail Trade	2,490	10.9	\$404	462,301	11.4	\$468
Transportation and Warehousing	1,348	5.9	\$636	115,772	2.8	\$721
Information	903	3.9	\$567	72,926	1.8	\$1,025
Finance and Insurance	349	1.5	\$648	152,965	3.8	\$1,183
Real Estate and Rental and Leasing	158	0.7	\$421	54,786	1.3	\$673
Professional and Technical Services	0	0.0	\$0	182,439	4.5	\$1,082
Management of Companies and Enterprises	99	0.4	\$897	69,658	1.7	\$1,374
Administrative and Waste Services	605	2.6	\$368	243,995	6.0	\$505
Educational Services	130	0.6	\$569	57,097	1.4	\$711
Health Care and Social Assistance	3,251	14.2	\$545	434,459	10.7	\$688
Arts, Entertainment and Recreation	365	1.6	\$374	53,965	1.3	\$551
Accommodation and Food Services	1,657	7.2	\$228	346,693	8.5	\$260
Other Services Ex. Public Admin	248	1.1	\$399	103,559	2.5	\$475
Public Administration				228,584	5.6	\$765
Unclassified	106	0.5	\$414	17,783	0.4	\$651

Trends Profile Map Rutherford County



Legend

- Public Schools
- Airports
- Hospitals
- Colleges and Universities
- Community Colleges
- Rail Lines
- Interstate highways
- US Highways
- State and County Highways
- Major Rivers and Streams
- Major Waterbodies
- Municipal Boundaries



Rutherford County

Employment Characteristics

Reporting Quarter: 4th Quarter 2007

County Profile Contact (919) 715-6374

Commerce Economic Development Contact (919) 733-4977

Employment Security Commission (919) 733-2936

Top Manufacturers (2nd Quarter 2007)

HANESBRANDS, INC
WATTS REGULATOR COMPANY (A CORP)
THE TORRINGTON COMPANY
PARKER HANNIFIN CORPORATION
UNITED SOUTHERN INDUSTRIES INC
REEVES BROTHERS INC
AFA ACQUISITION CORP
AEROQUIP CORP
CONE JACQUARDS LLC
MAKO MARINE INTERNATIONAL INC

Employment Range

250-499
250-499
250-499
100-249
100-249
100-249
100-249
100-249
100-249
100-249



Top Non-Manufacturing Employers (2nd Quarter 2007)

RUTHERFORD COUNTY SCHOOLS
WAL-MART ASSOCIATES INC
ACS BUSINESS PROCESS SOLUTIONS INC
RUTHERFORD HOSPITAL INC
COUNTY OF RUTHERFORD
ISOTHERMAL COMMUNITY COLLEGE
AMERICAN GREETINGS CORPORATION
A G INDUSTRIES INC
HERITAGE HEALTHCARE INC
TANNER COMPANIES LIMITED

Employment Range

1,000+
1,000+
1,000+
500-999
500-999
250-499
250-499
100-249
100-249
100-249

Industry

Education and Health Services
Trade, Transportation, and Utilities
Professional and Business Services
Education and Health Services
Public Administration
Education and Health Services
Information
Information
Education and Health Services
Trade, Transportation, and Utilities