

Transylvania County (NC)

2nd Quarter 2008



County Profile Contact (919) 715-6374

Commerce Economic Development Contact (919) 733-4977

Demographics

Population & Growth

	Population	Annual Growth Rate
2012 Total Population	32,170	0.8%
2007 Total Population	30,960	0.8%
2000 Total Population	29,334	
July 2006 Certified Population Estimate	30,354	
July 2006 Certified Population Growth	-546	
July 2006 Certified Net Migration	1,566	

Urban/Rural Representation

		Urban/Rural Percent
2000 Total Population: Urban - inside Urbanized Area	0	0.0%
2000 Total Population: Urban - inside Urbanized Clusters	10,880	37.1%
2000 Total Population: Rural - Farm	267	0.9%
2000 Total Population: Rural - Nonfarm	18,187	62.0%

Estimated Population by Age

		Pop by Age, % Est.
2012 Median Age	49	
2007 Median Age	47	
2000 Median Age	44	
2007 Total Pop 0-19	6,525	21.1%
2007 Total Pop 20-29	3,144	10.2%
2007 Total Pop 30-39	3,143	10.2%
2007 Total Pop 40-49	4,170	13.5%
2007 Total Pop 50-59	4,623	14.9%
2007 Total Pop 60+	9,355	30.2%

Working Commuters, 2000 Census

Workers, Travel Time

Avg Travel Time, Not at Home	22
Workers Not Working at Home	11,927
Travel Time to Work: < 5 minutes	510
Travel Time to Work: 5-9 minutes	1,763
Travel Time to Work: 10-14 minutes	2,278
Travel Time to Work: 15-19 minutes	1,862
Travel Time to Work: 20-24 minutes	1,524
Travel Time to Work: 25-29 minutes	565
Travel Time to Work: 30-34 minutes	1,374
Travel Time to Work: 35-39 minutes	394
Travel Time to Work: 40-44 minutes	387
Travel Time to Work: 45-59 minutes	660
Travel Time to Work: 60-89 minutes	397
Travel Time to Work: 90+ minutes	213

Workers, By Transportation

Worker Mode, Base	12,254
Work at Home	327
Drove Car/Truck/Van Alone	9,763
Carpooled Car/Truck/Van	1,769
Bus/Trolley Bus	7
Streetcar/Trolley Car	0
Subway/Elevated	0
Railroad	0
Ferryboat	6
Taxicab	7
Motorcycle	6
Bicycle	37
Walked	270
Other Means	62

Travel to Work

	Commuters	Percent by Residence
Worked in State/County of Residence	9,604	78.4%
Worked in State/Outside County of Residence	2,321	18.9%
Worked Outside State of Residence	329	2.7%

Education

		Pop Age 25+, %
2007 Average SAT score	1513	
2007 Percent of Graduates taking SAT	61%	
2005-06 Higher Education Completions	119	
2005-06 Higher Education Total Enrollment	1,560	
2000 Education Attainment - At Least High School Graduate	17,300	82.5%
2000 Education Attainment - At Least Bachelor`s Degree	4,975	23.7%

Housing

		Growth / Appreciation Est
2012 Total Housing	17,906	5.4%
2007 Total Housing	16,986	
2012 Median Value of Owner Occupied Housing	188,191	20.8%
2007 Median Value of Owner Occupied Housing	155,849	
2007 Owner Occupied Housing	10,761	
2007 Renter Occupied Housing	2,673	
2007 Total Households	13,434	
2000 Median Year Housing Structure Built	1,978	

Income

		Growth Estimated
2012 Median Family Income	\$65,606	15.2%
2007 Median Family Income	\$56,943	24.9%
2000 Median Family Income	\$45,581	
2012 Median Household Income	\$55,850	14.9%
2007 Median Household Income	\$48,589	25.4%
2000 Median Household Income	\$38,733	
2007 Median Disposable Income	\$37,560	
2007-2012 Per Capita Income: Annual Compound Growth Rate %		3.7%
2012 Per Capita Income	\$31,393	19.7%
2007 Per Capita Income	\$26,218	26.2%
2000 Per Capita Income	\$20,767	
2000 Total Pop with Income Below Poverty Level	2,708	
2000 Percent of Pop with Income Below Poverty Level	9.5%	

Employment / Unemployment

	Year to Date	2007 Annual
Employment (YTD2008Q1)	12,804	13,142
Unemployment (YTD2008Q1)	609	496
Unemployment Rate (YTD2008Q1)	4.5%	3.6%
Announced Job Creation (YTD2008Q1)	.	.
Total Announced Investments (\$mil)(YTD2008Q1)	.	.
Lost Jobs, Closings & Layoffs (YTD2008Q2)	.	0
Establishment Events, Closings & Layoffs (YTD2008Q2)	.	0

Employment / Wages by Industry	2007 3rd Qtr Employment	2006 Annual Employment	2007 3rd Qtr Avg Weekly Wage	2006 Avg Weekly Wage
Total All Industries	8,813	8,178	\$553	\$539
Total Government	558	838	\$993	\$655
Total Private Industry	8,255	7,340	\$524	\$520
Agriculture Forestry Fishing & Hunting	0	0	.	.
Mining	0	0	.	.
Utilities	0	0	.	.
Construction	907	786	\$608	\$581
Manufacturing	455	450	\$729	\$686
Wholesale Trade	356	346	\$818	\$844
Retail Trade	1,556	1,371	\$375	\$390
Transportation and Warehousing	62	60	\$752	\$761
Information	130	152	\$761	\$897
Finance and Insurance	238	214	\$669	\$768
Real Estate and Rental and Leasing	111	90	\$568	\$767
Professional and Technical Services	255	200	\$559	\$589
Management of Companies and Enterprises
Administrative and Waste Services	360	239	\$653	\$594
Educational Services	576	838	\$928	\$655
Health Care and Social Assistance	1,492	1,460	\$624	\$588
Arts, Entertainment and Recreation	236	180	\$434	\$442
Accommodation and Food Services	1,553	1,274	\$315	\$275
Other Services Ex. Public Admin	253	242	\$481	\$445
Public Administration	188	193	\$760	\$718
Unclassified	84	83	\$614	\$419

Quality of Life

Taxes

FY2008-09 Property Tax Rate per \$100 Value	\$0.5400
FY2006-07 Annual Taxable Retail Sales (\$mil)	\$279.8
2008 Tier designation	2

Weather

Annual Rainfall	48
Annual Snowfall	11
Average Annual Temperature	55
Average Annual High Temperature	71
Average Annual Low Temperature	47

Commercial/Retail/Industrial

2008 Available Industrial Buildings	7
2006 Establishments: Total Private Industry	1,582
2006 Establishments: Manufacturing	27

Childcare

May 2008 Licensed Child Care Facilities	12
May 2008 Licensed Child Care Slots	765

Healthcare Providers

2006 Number of Physicians	45
2006 Physicians per 10,000 population	15
2006 RNs per 10,000 population	74
2006 Dentists per 10,000 population	3
2006 Pharmacists per 10,000 population	7

Local Retail Business

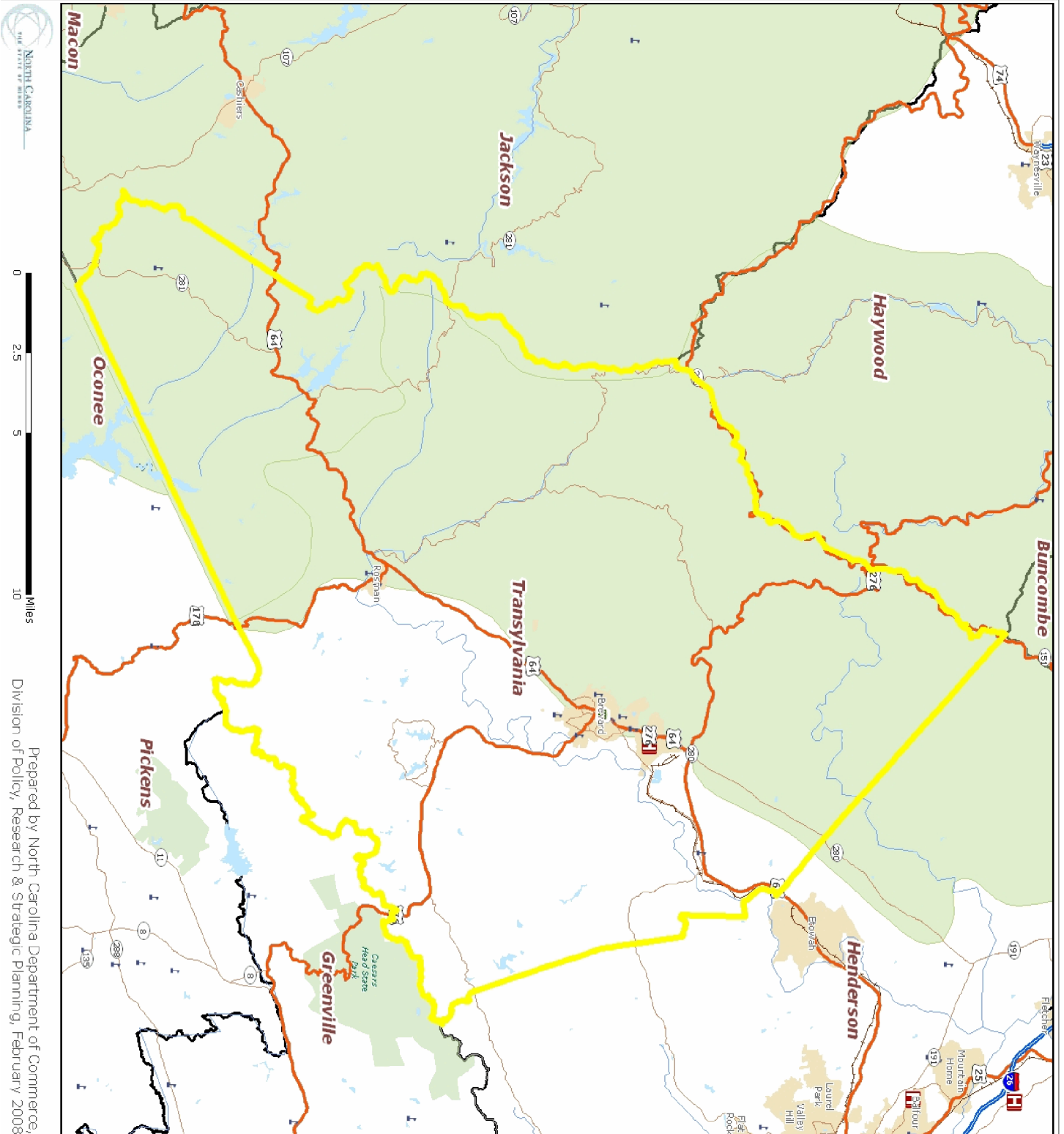
2007 Total Retail Sales (With Food/Drink) (\$mil)	\$415.3
2007 Total Retail Businesses (With Food/Drink)	307
2007 Avg Household Retail Demand (Food/Drink) (\$)	\$25,431

Sources:

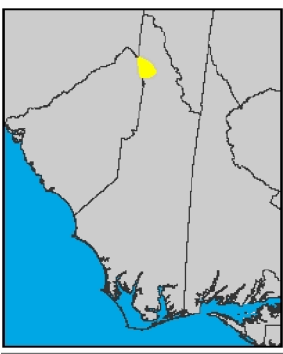
ESRI for demographics, working population, educational attainment, housing, income, crime, weather, and retail data. <http://www.esri.com>
 NC Dept. of Education and various state education departments for SAT data by county system. <http://www.ncpublicschools.org>
 US Dept. of Education, National Center for Education Statistics for higher education data. <http://nces.ed.gov/ipeds/>
 NC Commerce for announced new jobs and investment, NC tiers, and number of industrial buildings. <http://www.nccommerce.com/en>
 NC Employment Security Commission for lost jobs and affected establishments data. <http://www.ncesc.com>
 NC Dept. of Health & Human Services for childcare data. <http://www.ncdhhs.gov/>
 UNC Sheps Center for healthcare provider statistics. <http://www.shepscenter.unc.edu/>
 US Bureau of Labor Statistics for employment and unemployment, wages and establishments by industry. <http://www.bls.gov>

Notes:

Data are the latest available at the date the profile was prepared. SAT scores use the new scoring system including a writing test for a perfect score of 2400 and represent county systems. ESRI 2007/2012 data are projections. Some data may be available only for North Carolina. For further details or questions, please check the Data Sources Guide at <https://edis.commerce.state.nc.us/docs/bibliography/dataGuide.htm>.



Prepared by North Carolina Department of Commerce,
Division of Policy, Research & Strategic Planning, February 2008



- Legend**
- Hospital
 - Public University
 - Private University
 - NC Community Colleges
 - School
 - Limited Access
 - Highway
 - Major Road
 - Local Road
 - Minor Road
 - Other Road
 - Ramp
 - Ferry
 - Pedestrian Way
 - Railroads (Local)
 - Airport Area
 - Stream
 - Intermittent Stream
 - Canal
 - Dam
 - National Park or Forest
 - State Park or Forest
 - Local Park or Recreation Area
 - Municipal Boundaries