

# Wilkes County (NC)

## 2nd Quarter 2008



County Profile Contact (919) 715-6374

Commerce Economic Development Contact (919) 733-4977

### Demographics

#### Population & Growth

	Population	Annual Growth Rate
2012 Total Population	71,759	0.7%
2007 Total Population	69,182	0.7%
2000 Total Population	65,632	
July 2006 Certified Population Estimate	66,924	
July 2006 Certified Population Growth	1,018	
July 2006 Certified Net Migration	282	

#### Urban/Rural Representation

	Population	Urban/Rural Percent
2000 Total Population: Urban - inside Urbanized Area	0	0.0%
2000 Total Population: Urban - inside Urbanized Clusters	17,248	26.3%
2000 Total Population: Rural - Farm	1,363	2.1%
2000 Total Population: Rural - Nonfarm	47,021	71.6%

#### Estimated Population by Age

	Population	Pop by Age, % Est.
2012 Median Age	42	
2007 Median Age	41	
2000 Median Age	39	
2007 Total Pop 0-19	16,370	23.7%
2007 Total Pop 20-29	7,516	10.9%
2007 Total Pop 30-39	10,098	14.6%
2007 Total Pop 40-49	10,769	15.6%
2007 Total Pop 50-59	9,934	14.4%
2007 Total Pop 60+	14,495	21.0%

### Working Commuters, 2000 Census

#### Workers, Travel Time

Avg Travel Time, Not at Home	24
Workers Not Working at Home	30,279
Travel Time to Work: < 5 minutes	766
Travel Time to Work: 5-9 minutes	2,953
Travel Time to Work: 10-14 minutes	5,089
Travel Time to Work: 15-19 minutes	6,386
Travel Time to Work: 20-24 minutes	5,085
Travel Time to Work: 25-29 minutes	1,726
Travel Time to Work: 30-34 minutes	3,440
Travel Time to Work: 35-39 minutes	621
Travel Time to Work: 40-44 minutes	479
Travel Time to Work: 45-59 minutes	1,507
Travel Time to Work: 60-89 minutes	1,321
Travel Time to Work: 90+ minutes	906

#### Workers, By Transportation

Worker Mode, Base	31,041
Work at Home	762
Drove Car/Truck/Van Alone	24,740
Carpooled Car/Truck/Van	5,088
Bus/Trolley Bus	15
Streetcar/Trolley Car	0
Subway/Elevated	0
Railroad	0
Ferryboat	0
Taxicab	0
Motorcycle	17
Bicycle	15
Walked	289
Other Means	115

<b>Travel to Work</b>	<b>Commuters</b>	<b>Percent by Residence</b>
Worked in State/County of Residence	24,270	78.2%
Worked in State/Outside County of Residence	6,475	20.9%
Worked Outside State of Residence	296	1.0%

## Education

		<b>Pop Age 25+, %</b>
2007 Average SAT score	1499	
2007 Percent of Graduates taking SAT	47%	
2005-06 Higher Education Completions	477	
2005-06 Higher Education Total Enrollment	.	
2000 Education Attainment - At Least High School Graduate	30,017	66.0%
2000 Education Attainment - At Least Bachelor`s Degree	5,135	11.3%

## Housing

		<b>Growth / Appreciation Est</b>
2012 Total Housing	33,363	5.3%
2007 Total Housing	31,697	
2012 Median Value of Owner Occupied Housing	140,070	17.9%
2007 Median Value of Owner Occupied Housing	118,827	
2007 Owner Occupied Housing	22,454	
2007 Renter Occupied Housing	5,970	
2007 Total Households	28,424	
2000 Median Year Housing Structure Built	1,975	

## Income

		<b>Growth Estimated</b>
2012 Median Family Income	\$54,881	13.4%
2007 Median Family Income	\$48,392	19.4%
2000 Median Family Income	\$40,545	
2012 Median Household Income	\$46,032	12.4%
2007 Median Household Income	\$40,943	19.7%
2000 Median Household Income	\$34,214	
2007 Median Disposable Income	\$32,743	
2007-2012 Per Capita Income: Annual Compound Growth Rate %		2.7%
2012 Per Capita Income	\$24,481	14.5%
2007 Per Capita Income	\$21,389	22.1%
2000 Per Capita Income	\$17,516	
2000 Total Pop with Income Below Poverty Level	7,662	
2000 Percent of Pop with Income Below Poverty Level	11.9%	

## Employment / Unemployment

	<b>Year to Date</b>	<b>2007 Annual</b>
Employment (YTD2008Q1)	29,622	30,449
Unemployment (YTD2008Q1)	1,991	1,699
Unemployment Rate (YTD2008Q1)	6.3%	5.3%
Announced Job Creation (YTD2008Q1)	.	.
Total Announced Investments (\$mil)(YTD2008Q1)	.	.
Lost Jobs, Closings & Layoffs (YTD2008Q2)	434	20
Establishment Events, Closings & Layoffs (YTD2008Q2)	3	1

<b>Employment / Wages by Industry</b>	<b>2007 3rd Qtr Employment</b>	<b>2006 Annual Employment</b>	<b>2007 3rd Qtr Avg Weekly Wage</b>	<b>2006 Avg Weekly Wage</b>
Total All Industries	17,467	18,190	\$505	\$593
Total Government	676	1,349	\$734	\$625
Total Private Industry	16,791	16,841	\$496	\$558
Agriculture Forestry Fishing & Hunting	0	0	.	.
Mining	0	0	.	.
Utilities	41	44	\$778	\$788
Construction	1,021	978	\$586	\$581
Manufacturing	4,992	5,054	\$529	\$545
Wholesale Trade	911	887	\$702	\$780
Retail Trade	2,664	3,043	\$412	\$522
Transportation and Warehousing	722	791	\$808	\$758
Information	292	276	\$806	\$828
Finance and Insurance	1,006	915	\$618	\$683
Real Estate and Rental and Leasing	179	119	\$543	\$416
Professional and Technical Services	13	10	\$1,096	\$928
Management of Companies and Enterprises	0	0	.	.
Administrative and Waste Services	660	601	\$487	\$497
Educational Services	75	51	\$370	\$331
Health Care and Social Assistance	1,997	1,947	\$464	\$484
Arts, Entertainment and Recreation	108	75	\$264	\$300
Accommodation and Food Services	1,623	1,572	\$207	\$210
Other Services Ex. Public Admin	567	546	\$337	\$327
Public Administration	548	1,223	\$729	\$624
Unclassified	49	58	\$744	\$451

## Quality of Life

### Taxes

FY2008-09 Property Tax Rate per \$100 Value	\$0.5700
FY2006-07 Annual Taxable Retail Sales (\$mil)	\$427.1
2008 Tier designation	2

### Weather

Annual Rainfall	49
Annual Snowfall	10
Average Annual Temperature	61
Average Annual High Temperature	72
Average Annual Low Temperature	47

### Commercial/Retail/Industrial

2008 Available Industrial Buildings	50
2006 Establishments: Total Private Industry	2,599
2006 Establishments: Manufacturing	94

### Childcare

May 2008 Licensed Child Care Facilities	80
May 2008 Licensed Child Care Slots	2,919

### Healthcare Providers

2006 Number of Physicians	69
2006 Physicians per 10,000 population	10
2006 RNs per 10,000 population	62
2006 Dentists per 10,000 population	3
2006 Pharmacists per 10,000 population	7

### Local Retail Business

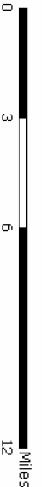
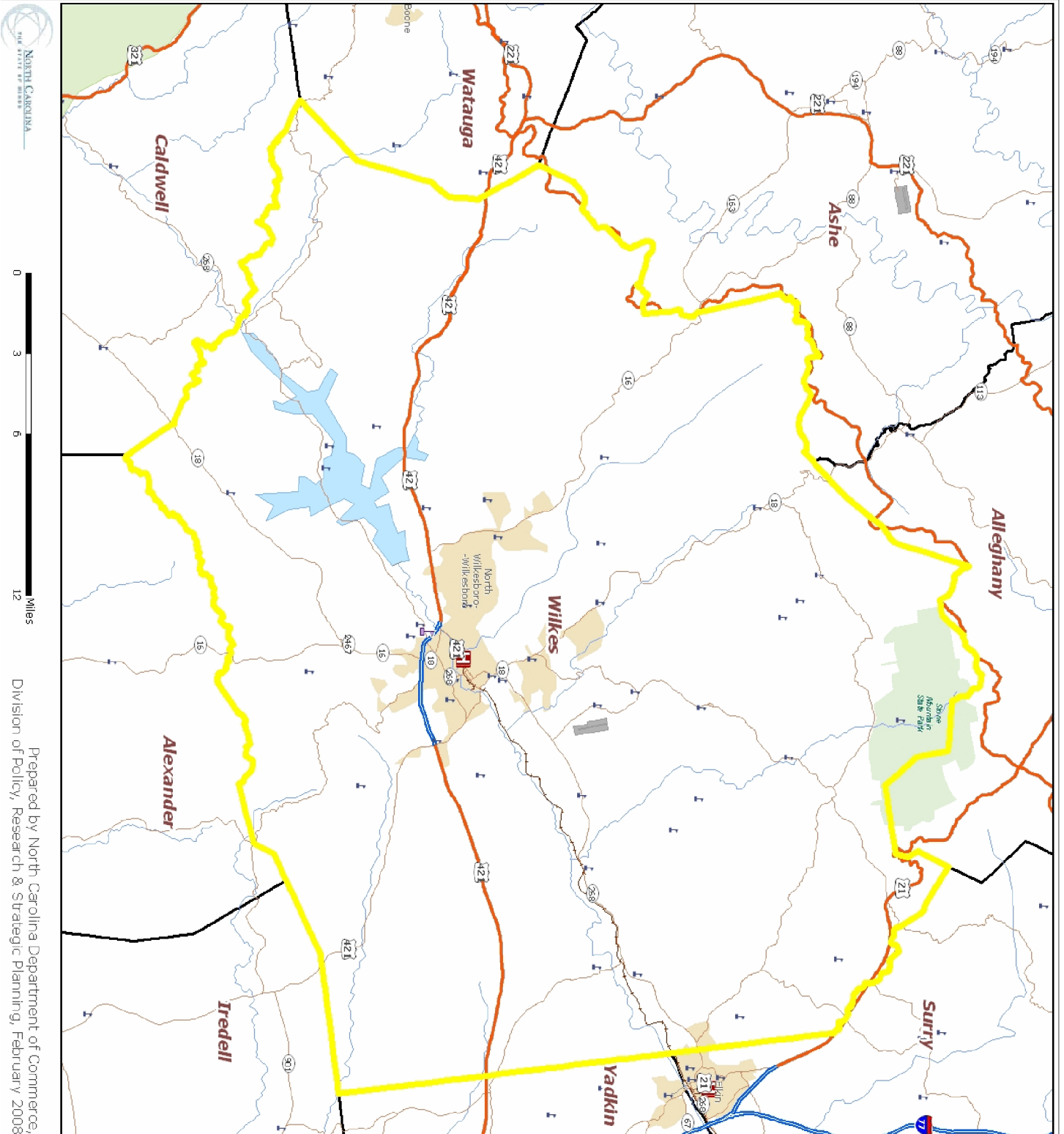
2007 Total Retail Sales (With Food/Drink) (\$mil)	\$565.0
2007 Total Retail Businesses (With Food/Drink)	605
2007 Avg Household Retail Demand (Food/Drink) (\$)	\$22,558

### Sources:

ESRI for demographics, working population, educational attainment, housing, income, crime, weather, and retail data. <http://www.esri.com>  
 NC Dept. of Education and various state education departments for SAT data by county system. <http://www.ncpublicschools.org>  
 US Dept. of Education, National Center for Education Statistics for higher education data. <http://nces.ed.gov/ipeds/>  
 NC Commerce for announced new jobs and investment, NC tiers, and number of industrial buildings. <http://www.nccommerce.com/en>  
 NC Employment Security Commission for lost jobs and affected establishments data. <http://www.ncesc.com>  
 NC Dept. of Health & Human Services for childcare data. <http://www.ncdhhs.gov/>  
 UNC Sheps Center for healthcare provider statistics. <http://www.shepscenter.unc.edu/>  
 US Bureau of Labor Statistics for employment and unemployment, wages and establishments by industry. <http://www.bls.gov>

### Notes:

Data are the latest available at the date the profile was prepared. SAT scores use the new scoring system including a writing test for a perfect score of 2400 and represent county systems. ESRI 2007/2012 data are projections. Some data may be available only for North Carolina. For further details or questions, please check the Data Sources Guide at <https://edis.commerce.state.nc.us/docs/bibliography/dataGuide.htm>.



Prepared by North Carolina Department of Commerce,  
Division of Policy, Research & Strategic Planning, February 2008

**Legend**

- Hospital
- Public University
- Private University
- NC Community Colleges
- School
- Limited Access
- Highway
- Major Road
- Local Road
- Minor Road
- Other Road
- Ramp
- Ferry
- Pedestrian Way
- Railroads (Local)
- Airport Area
- Stream
- Intermittent Stream
- Canal
- Dam
- National Park or Forest
- State Park or Forest
- Local Park or Recreation Area
- Municipal Boundaries

