

Yancey County (NC)

2nd Quarter 2008



County Profile Contact (919) 715-6374

Commerce Economic Development Contact (919) 733-4977

Demographics

Population & Growth

	Population	Annual Growth Rate
2012 Total Population	19,632	0.8%
2007 Total Population	18,853	0.8%
2000 Total Population	17,774	
July 2006 Certified Population Estimate	18,368	
July 2006 Certified Population Growth	-53	
July 2006 Certified Net Migration	647	

Urban/Rural Representation

	Population	Urban/Rural Percent
2000 Total Population: Urban - inside Urbanized Area	0	0.0%
2000 Total Population: Urban - inside Urbanized Clusters	0	0.0%
2000 Total Population: Rural - Farm	653	3.7%
2000 Total Population: Rural - Nonfarm	17,121	96.3%

Estimated Population by Age

	Population	Pop by Age, % Est.
2012 Median Age	45	
2007 Median Age	44	
2000 Median Age	42	
2007 Total Pop 0-19	4,085	21.7%
2007 Total Pop 20-29	1,880	10.0%
2007 Total Pop 30-39	2,497	13.2%
2007 Total Pop 40-49	2,680	14.2%
2007 Total Pop 50-59	3,061	16.2%
2007 Total Pop 60+	4,650	24.7%

Working Commuters, 2000 Census

Workers, Travel Time

Avg Travel Time, Not at Home	27
Workers Not Working at Home	7,445
Travel Time to Work: < 5 minutes	270
Travel Time to Work: 5-9 minutes	804
Travel Time to Work: 10-14 minutes	1,040
Travel Time to Work: 15-19 minutes	1,032
Travel Time to Work: 20-24 minutes	940
Travel Time to Work: 25-29 minutes	447
Travel Time to Work: 30-34 minutes	1,142
Travel Time to Work: 35-39 minutes	166
Travel Time to Work: 40-44 minutes	232
Travel Time to Work: 45-59 minutes	609
Travel Time to Work: 60-89 minutes	550
Travel Time to Work: 90+ minutes	213

Workers, By Transportation

Worker Mode, Base	7,665
Work at Home	220
Drove Car/Truck/Van Alone	5,611
Carpooled Car/Truck/Van	1,585
Bus/Trolley Bus	33
Streetcar/Trolley Car	1
Subway/Elevated	0
Railroad	0
Ferryboat	0
Taxicab	0
Motorcycle	4
Bicycle	0
Walked	154
Other Means	57

Travel to Work

	Commuters	Percent by Residence
Worked in State/County of Residence	5,024	65.5%
Worked in State/Outside County of Residence	2,545	33.2%
Worked Outside State of Residence	96	1.3%

Education

		Pop Age 25+, %
2007 Average SAT score	1520	
2007 Percent of Graduates taking SAT	41%	
2005-06 Higher Education Completions	.	
2005-06 Higher Education Total Enrollment	.	
2000 Education Attainment - At Least High School Graduate	9,042	71.1%
2000 Education Attainment - At Least Bachelor`s Degree	1,668	13.1%

Housing

		Growth / Appreciation Est
2012 Total Housing	11,052	5.0%
2007 Total Housing	10,525	
2012 Median Value of Owner Occupied Housing	143,450	21.2%
2007 Median Value of Owner Occupied Housing	118,353	
2007 Owner Occupied Housing	6,597	
2007 Renter Occupied Housing	1,538	
2007 Total Households	8,135	
2000 Median Year Housing Structure Built	1,977	

Income

		Growth Estimated
2012 Median Family Income	\$49,928	14.9%
2007 Median Family Income	\$43,465	20.8%
2000 Median Family Income	\$35,976	
2012 Median Household Income	\$40,504	13.3%
2007 Median Household Income	\$35,734	20.8%
2000 Median Household Income	\$29,587	
2007 Median Disposable Income	\$29,023	
2007-2012 Per Capita Income: Annual Compound Growth Rate %		3.0%
2012 Per Capita Income	\$23,132	16.2%
2007 Per Capita Income	\$19,915	21.9%
2000 Per Capita Income	\$16,335	
2000 Total Pop with Income Below Poverty Level	2,780	
2000 Percent of Pop with Income Below Poverty Level	15.8%	

Employment / Unemployment

	Year to Date	2007 Annual
Employment (YTD2008Q1)	7,701	7,805
Unemployment (YTD2008Q1)	573	466
Unemployment Rate (YTD2008Q1)	6.9%	5.6%
Announced Job Creation (YTD2008Q1)	.	.
Total Announced Investments (\$mil)(YTD2008Q1)	.	.
Lost Jobs, Closings & Layoffs (YTD2008Q2)	.	125
Establishment Events, Closings & Layoffs (YTD2008Q2)	.	1

Employment / Wages by Industry	2007 3rd Qtr Employment	2006 Annual Employment	2007 3rd Qtr Avg Weekly Wage	2006 Avg Weekly Wage
Total All Industries	2,728	3,169	\$582	\$490
Total Government	556	646	\$679	\$555
Total Private Industry	2,172	2,523	\$557	\$476
Agriculture Forestry Fishing & Hunting	0	0	.	.
Mining	0	0	.	.
Utilities	0	0	.	.
Construction	563	517	\$630	\$619
Manufacturing	512	611	\$570	\$563
Wholesale Trade	242	0	\$784	.
Retail Trade	474	479	\$385	\$400
Transportation and Warehousing	32	138	\$793	\$545
Information	56	56	\$558	\$545
Finance and Insurance	86	80	\$670	\$609
Real Estate and Rental and Leasing	49	46	\$440	\$394
Professional and Technical Services	0	0	.	.
Management of Companies and Enterprises	0	0	.	.
Administrative and Waste Services	103	115	\$409	\$429
Educational Services	412	481	\$645	\$560
Health Care and Social Assistance	0	0	.	.
Arts, Entertainment and Recreation	0	127	.	\$426
Accommodation and Food Services	0	317	.	\$186
Other Services Ex. Public Admin	56	54	\$525	\$498
Public Administration	113	130	\$773	\$643
Unclassified	31	18	\$275	\$450

Quality of Life

Taxes

FY2008-09 Property Tax Rate per \$100 Value	\$0.4500
FY2006-07 Annual Taxable Retail Sales (\$mil)	\$119.2
2008 Tier designation	1

Weather

Annual Rainfall	43
Annual Snowfall	20
Average Annual Temperature	59
Average Annual High Temperature	67
Average Annual Low Temperature	42

Commercial/Retail/Industrial

2008 Available Industrial Buildings	2
2006 Establishments: Total Private Industry	660
2006 Establishments: Manufacturing	13

Childcare

May 2008 Licensed Child Care Facilities	11
May 2008 Licensed Child Care Slots	414

Healthcare Providers

2006 Number of Physicians	10
2006 Physicians per 10,000 population	5
2006 RNs per 10,000 population	44
2006 Dentists per 10,000 population	2
2006 Pharmacists per 10,000 population	3

Local Retail Business

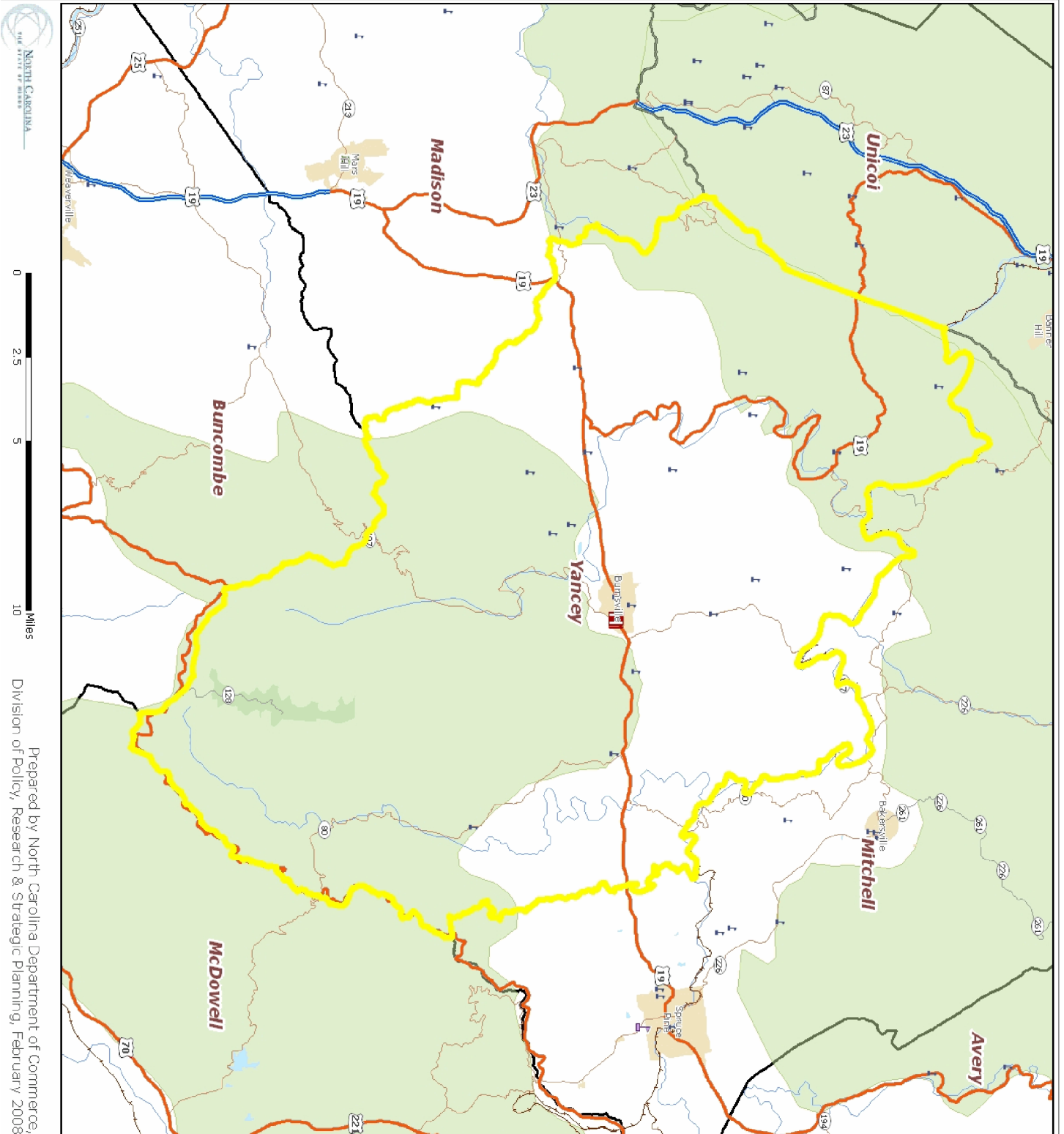
2007 Total Retail Sales (With Food/Drink) (\$mil)	\$164.3
2007 Total Retail Businesses (With Food/Drink)	149
2007 Avg Household Retail Demand (Food/Drink) (\$)	\$20,590

Sources:

ESRI for demographics, working population, educational attainment, housing, income, crime, weather, and retail data. <http://www.esri.com>
 NC Dept. of Education and various state education departments for SAT data by county system. <http://www.ncpublicschools.org>
 US Dept. of Education, National Center for Education Statistics for higher education data. <http://nces.ed.gov/ipeds/>
 NC Commerce for announced new jobs and investment, NC tiers, and number of industrial buildings. <http://www.nccommerce.com/en>
 NC Employment Security Commission for lost jobs and affected establishments data. <http://www.ncesc.com>
 NC Dept. of Health & Human Services for childcare data. <http://www.ncdhhs.gov/>
 UNC Sheps Center for healthcare provider statistics. <http://www.shepscenter.unc.edu/>
 US Bureau of Labor Statistics for employment and unemployment, wages and establishments by industry. <http://www.bls.gov>

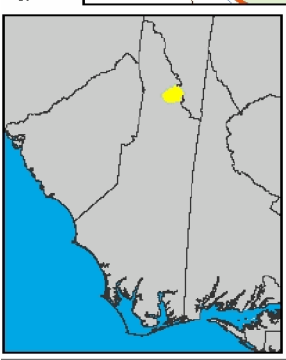
Notes:

Data are the latest available at the date the profile was prepared. SAT scores use the new scoring system including a writing test for a perfect score of 2400 and represent county systems. ESRI 2007/2012 data are projections. Some data may be available only for North Carolina. For further details or questions, please check the Data Sources Guide at <https://edis.commerce.state.nc.us/docs/bibliography/dataGuide.htm>.



Legend

- Hospital
- Public University
- Private University
- NC Community Colleges
- School
- Limited Access
- Highway
- Major Road
- Local Road
- Minor Road
- Other Road
- Ramp
- Ferry
- Pedestrian Way
- Railroads (Local)
- Airport Area
- Stream
- Intermittent Stream
- Canal
- Dam
- National Park or Forest
- State Park or Forest
- Local Park or Recreation Area
- Municipal Boundaries



Prepared by North Carolina Department of Commerce,
Division of Policy, Research & Strategic Planning, February 2008

